

ABBYY®

ABBYY FlexiCapture
Connector for Blue Prism

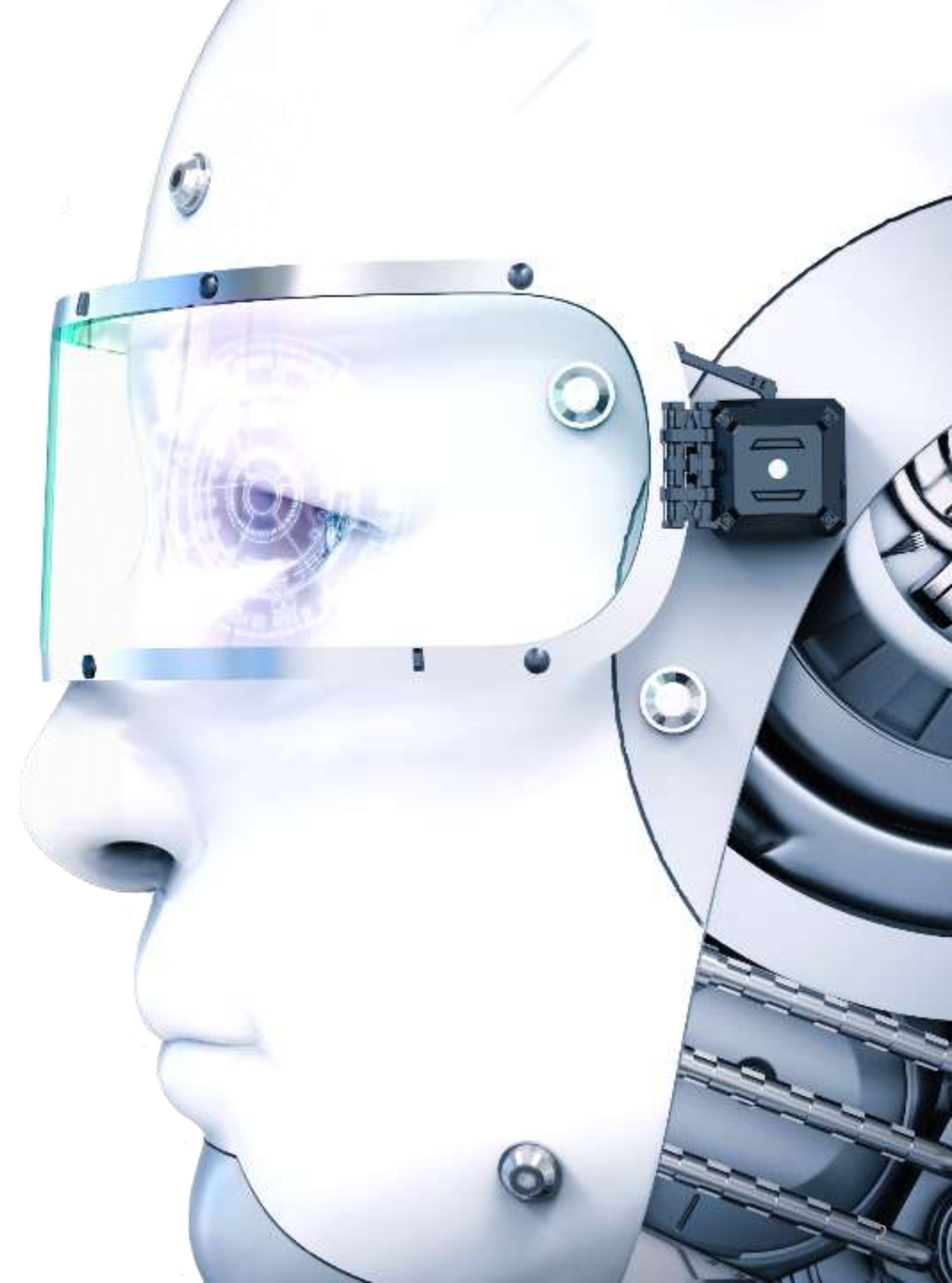
FlexiCapture as
an unattended service



FlexiCapture as an unattended service

Contents

- How to run Sample FlexiCapture project
 - FlexiCapture project settings
 - Blue Prism settings
- How to configure FlexiCapture project for an unattended usage scenario
 - Configure standard XML export profile (steps 1-11)
 - Unattended schema (steps 12 - 14)





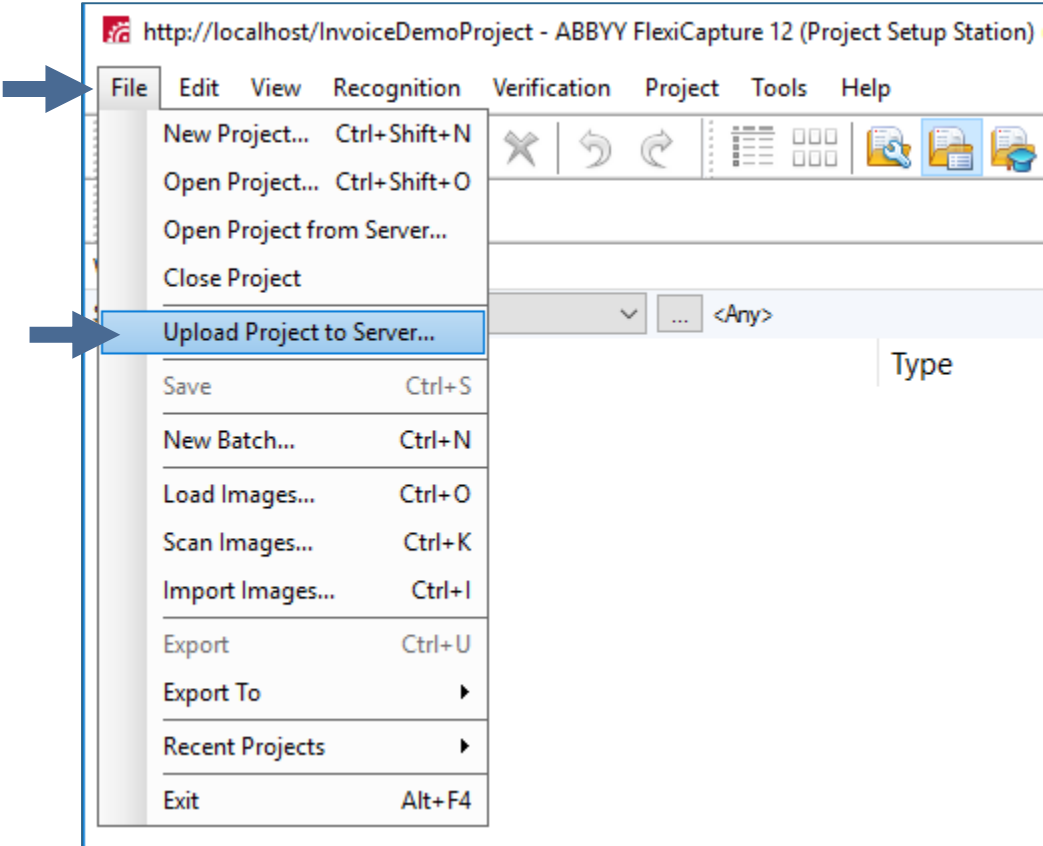
How to run Sample FlexiCapture project

How to run Sample FlexiCapture project: FlexiCapture project settings

Step 1

- Open the sample project - *InvoiceDemoProject* on the *Project Setup Station*
- Click *File>Upload Project to Server*
- Open project from the server

Note! To be able to send documents from Blue Prism to ABBYY FlexiCapture, you need to open the following port in the firewall to the Application Server: port 80 (if HTTP is used) or port 443 (if HTTPS is used)



How to run Sample FlexiCapture project: Blue Prism settings

Step 2. In Blue Prism:

- Import the files:

BPA Object - FlexiCapture 12 VBO.xml

together with

BPA Process - FlexiCapture 12 Processor.xml

usage example

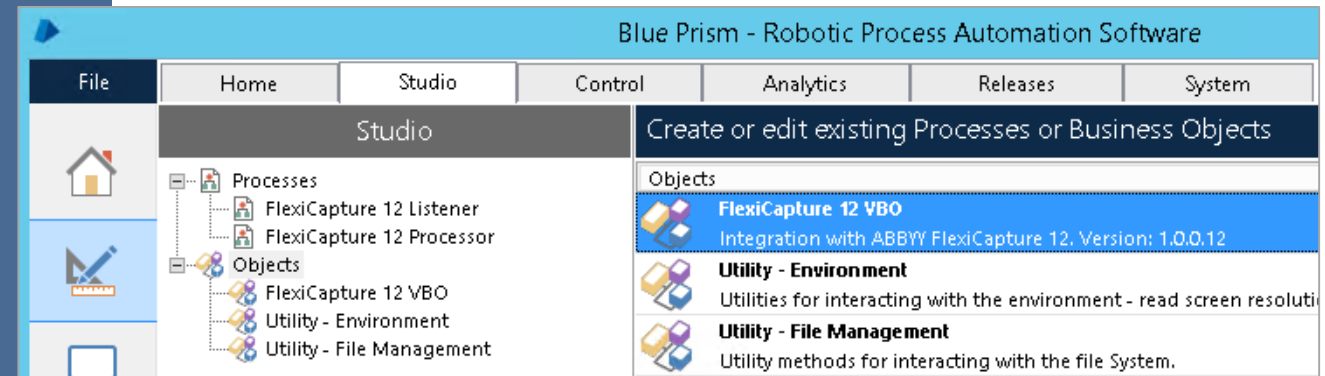
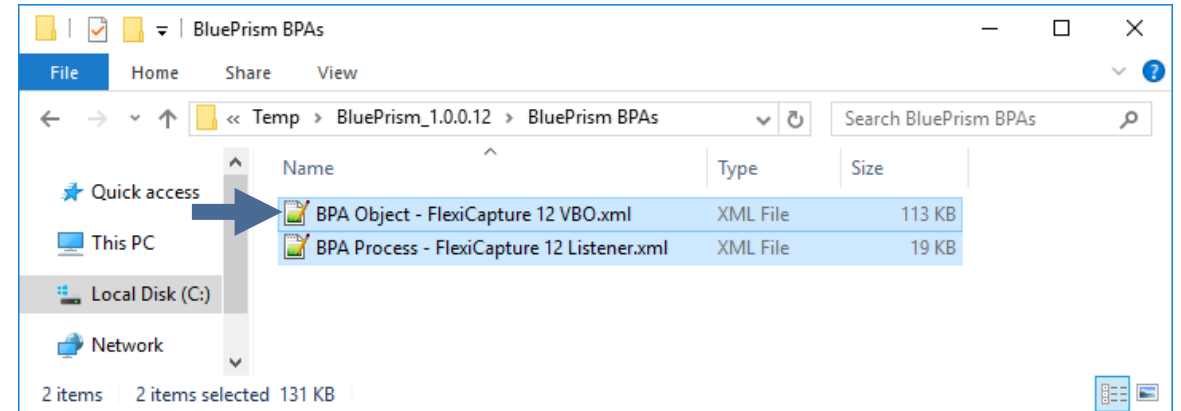
- Install additional objects:

BPA Object - Utility - File Management.xml

BPA Object - Utility - Environment.xml

(default location is C:\Program Files

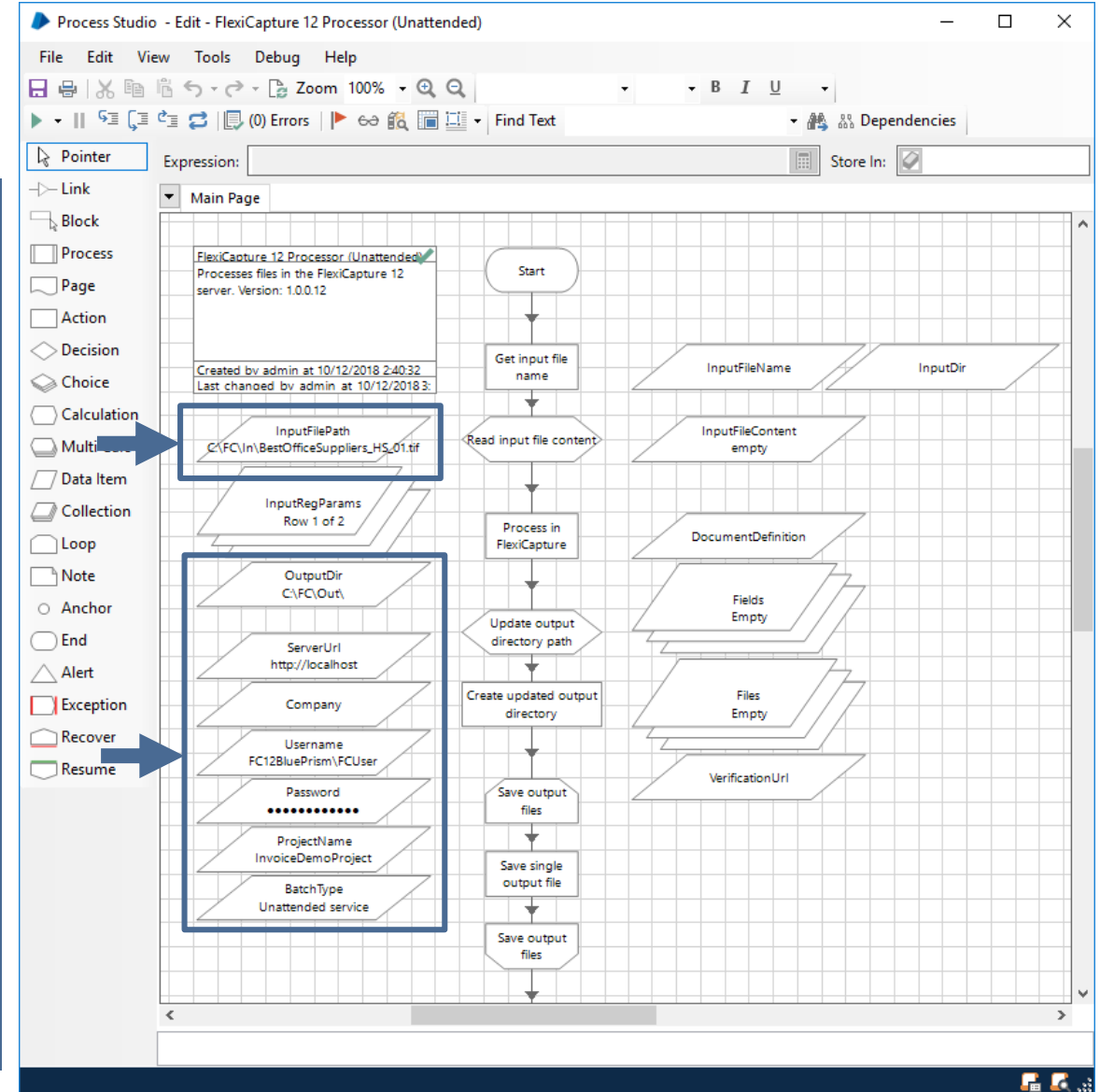
\Blue Prism Limited\Blue Prism Automate\VBO)



How to run Sample FlexiCapture project: Blue Prism settings

Step 3. In the *FlexiCapture 12 Processor* example specify:

- ***InputFilePath*** – the path to the file from the *Images* folder from distribution kit
- ***OutputDir*** – the folder for the processing results
- ***ServerUrl*** - the address of the ABBYY FlexiCapture 12 server: `http://<ApplicationServer>`
- ***Company*** - the name of the tenant (optional)
- ***Username*** and ***Password***
- ***ProjectName*** - specify *InvoiceDemoProject*
- ***BatchType*** - specify *Unattended service*



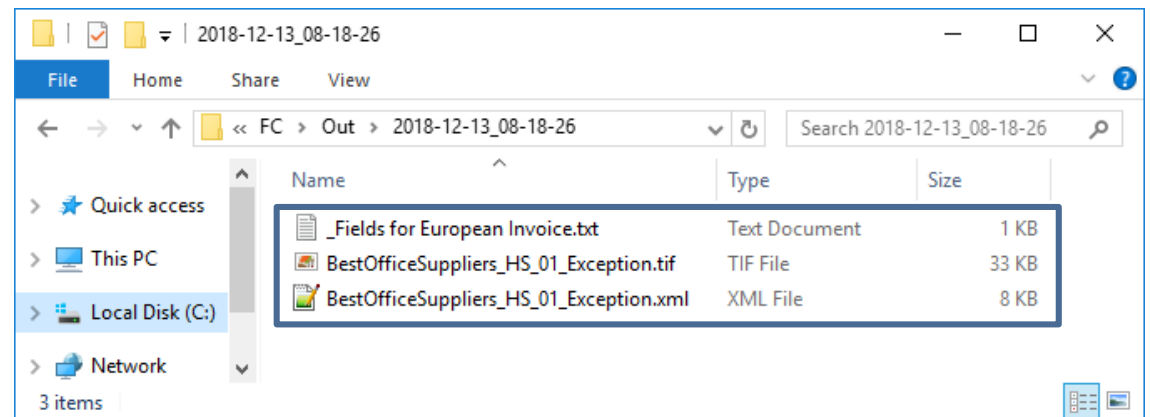
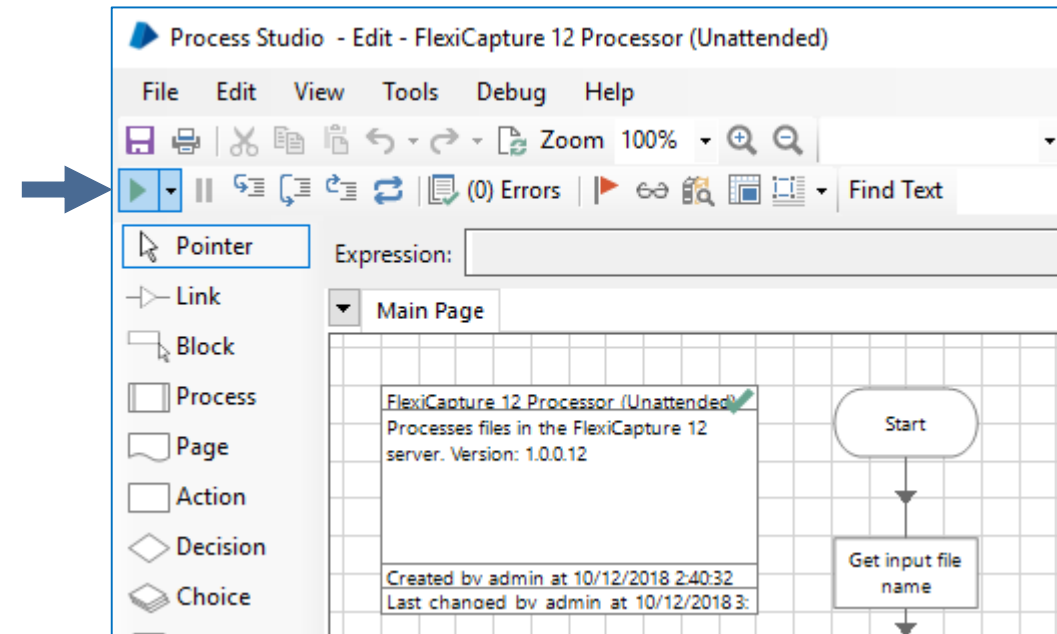
How to run Sample FlexiCapture project: Blue Prism settings

Step 4

- To start the *FlexiCapture 12 Processor* process, click the **Go** button

The image file will be sent to ABBYY FlexiCapture 12, and the processing results will be immediately sent back to Blue Prism.

The processing results in this example will include the original image file, an XML document, and fields and their data.



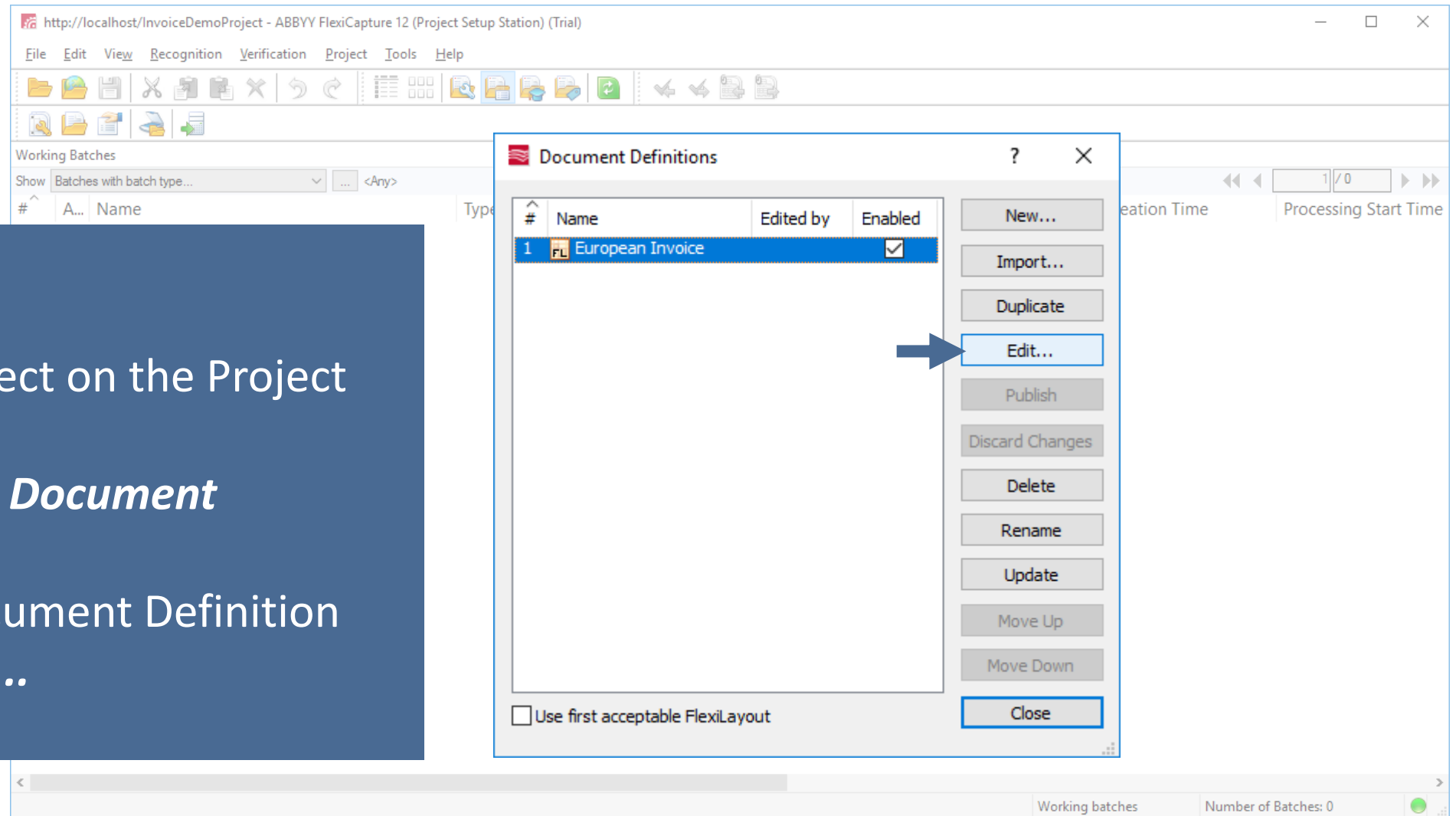


How to configure FlexiCapture project for unattended usage scenario

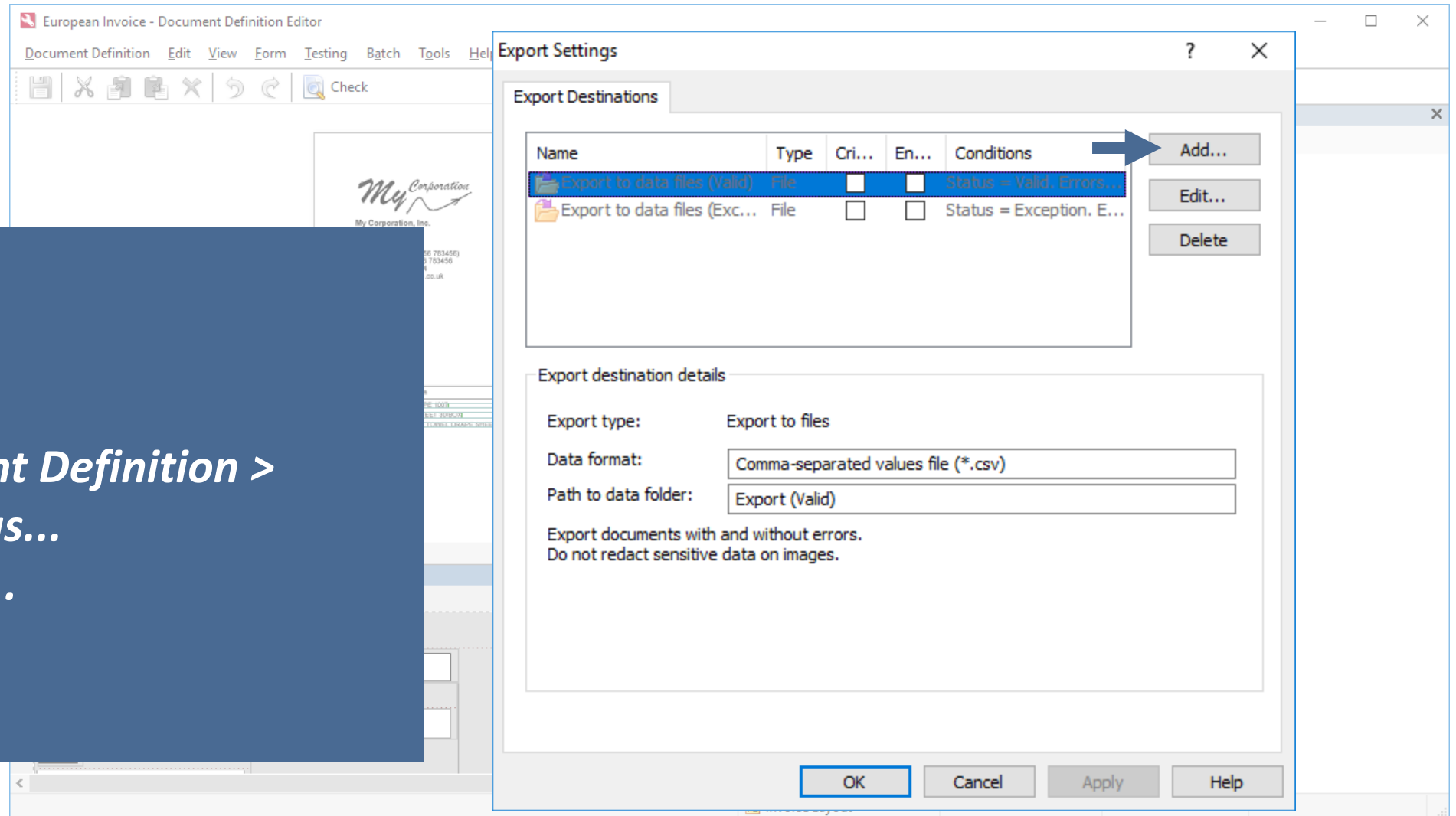
Configure standard XML export profile

Step 1

- Open the project on the Project Setup Station
- Click **Project > Document Definitions...**
- Select the Document Definition and click **Edit....**



Configure standard XML export profile



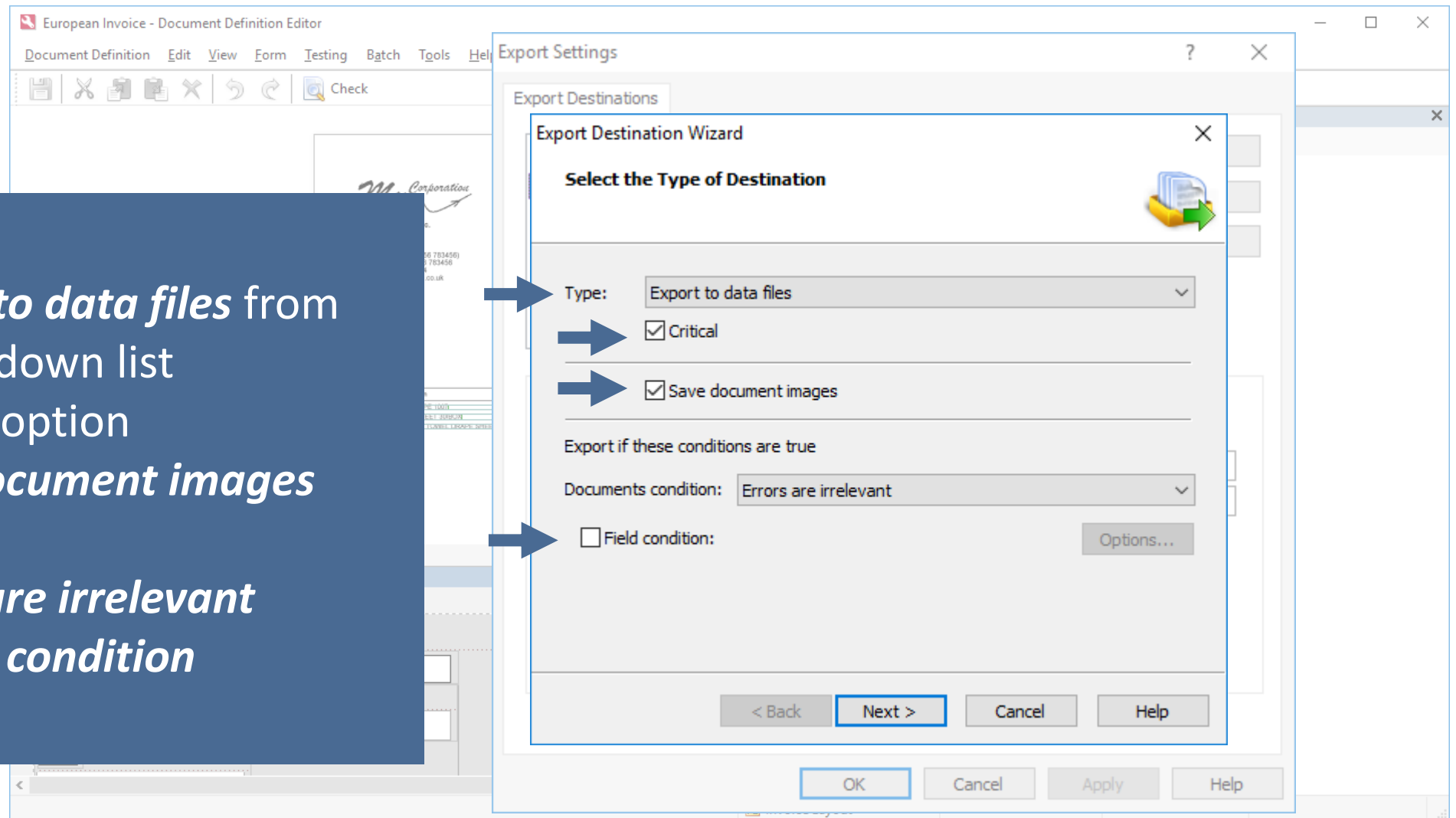
Step 2

- Click *Document Definition > Export Settings...*
- Click the *Add...*

Configure standard XML export profile

Step 3

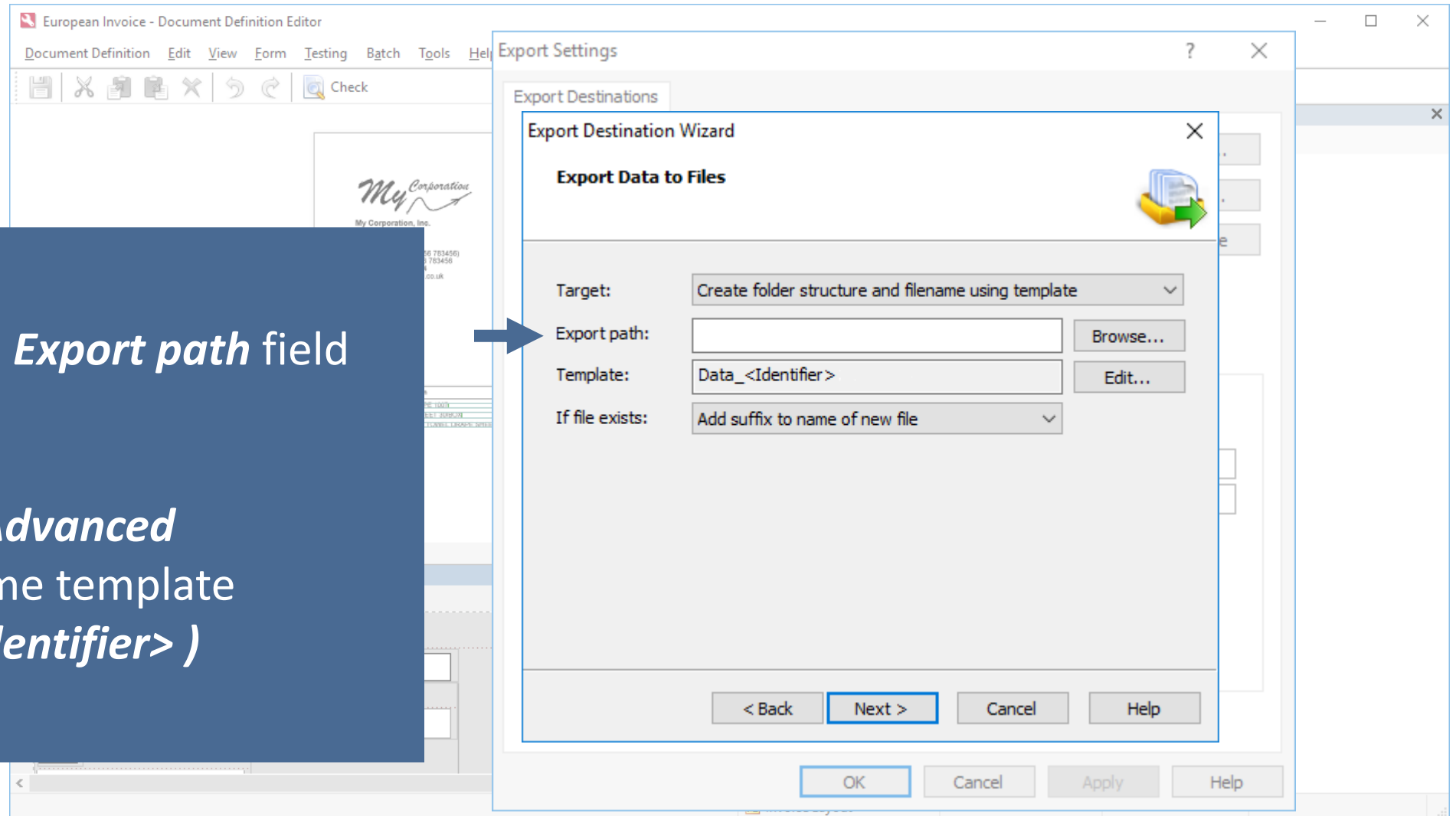
- Select **Export to data files** from the Type dropdown list
- Select **Critical** option
- Select **Save document images** option
- Select **Errors are irrelevant**
- Uncheck **Field condition**
- Click **Next**



Configure standard XML export profile

Step 4

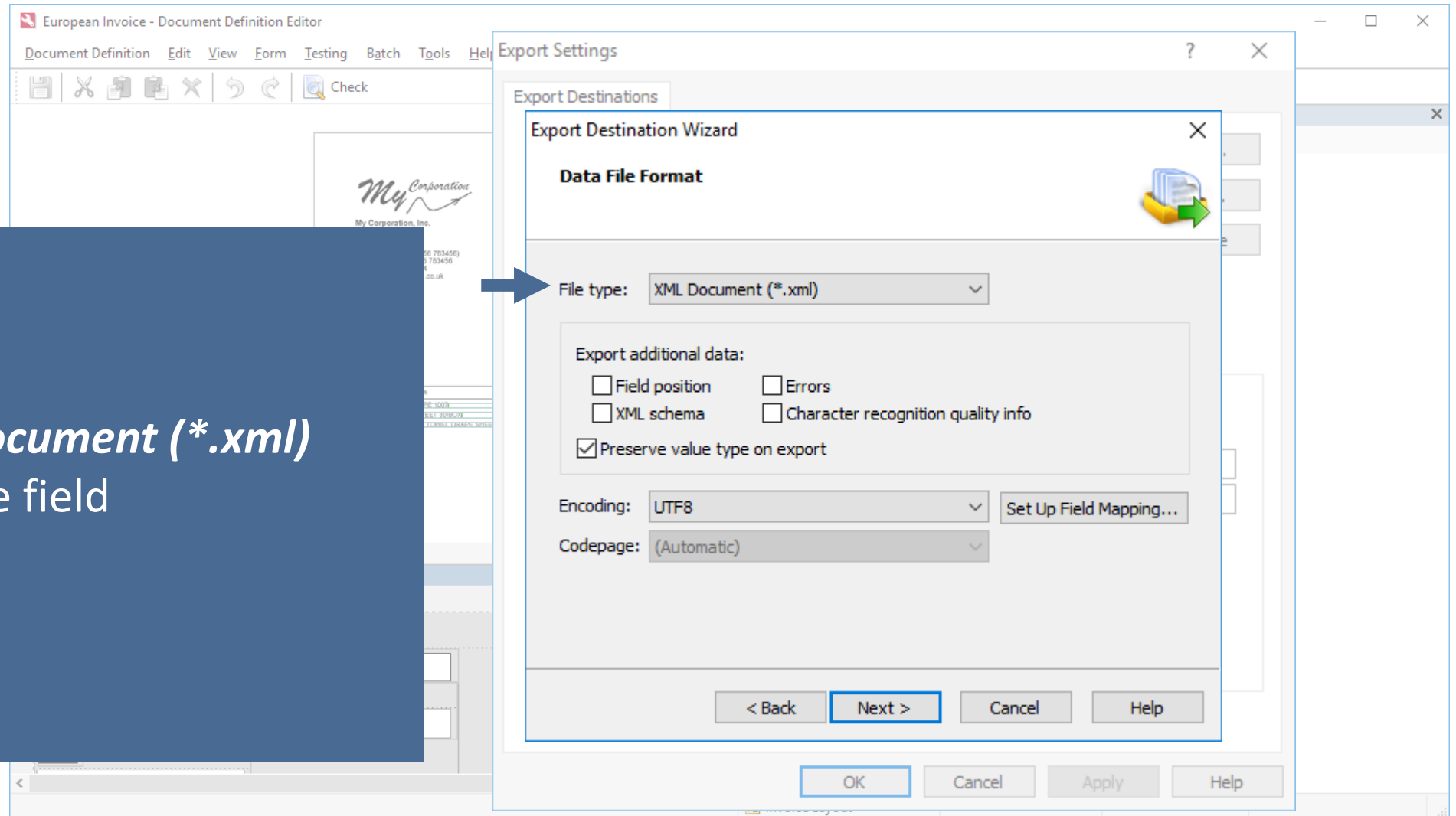
- Make sure the **Export path** field is empty
- Click **Edit**
- Select **View- Advanced**
- Specify filename template (e.g. **Data_<Identifier>**)
- Click **Next**



Configure standard XML export profile

Step 5

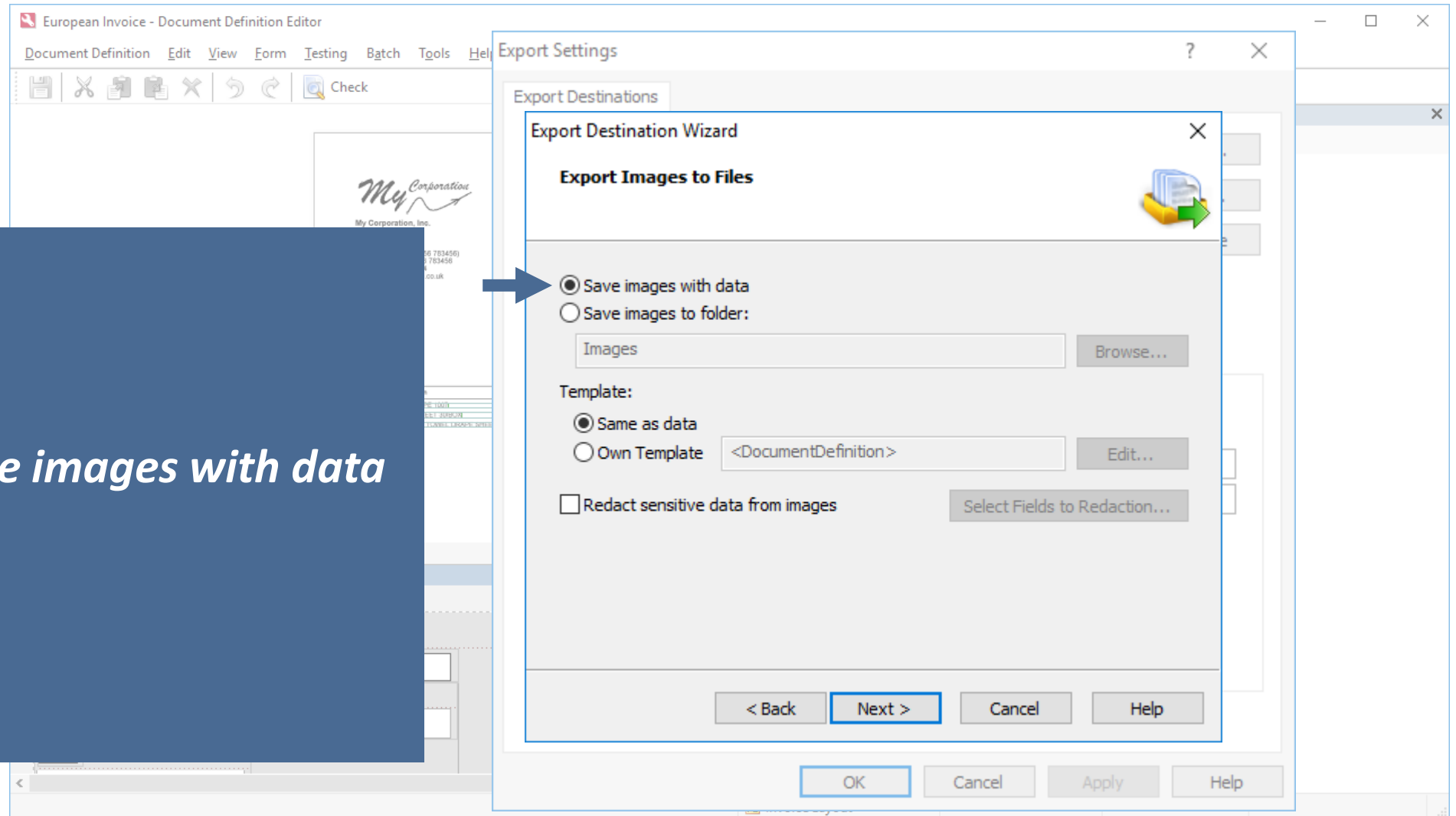
- Select ***XML Document (*.xml)*** in the File type field
- Click ***Next***



Configure standard XML export profile

Step 6

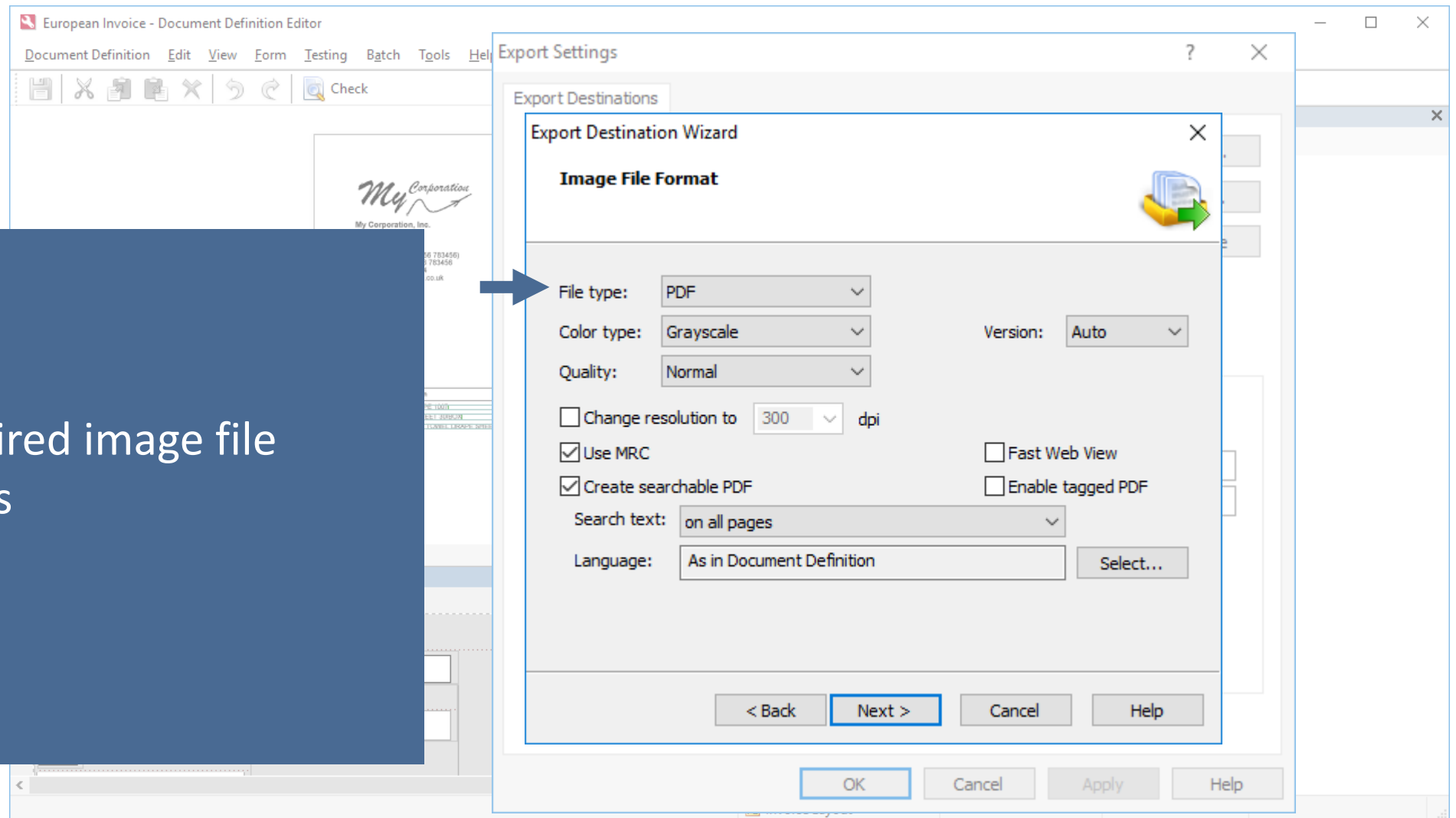
- Select the *Save images with data*
- Click *Next*



Configure standard XML export profile

Step 7

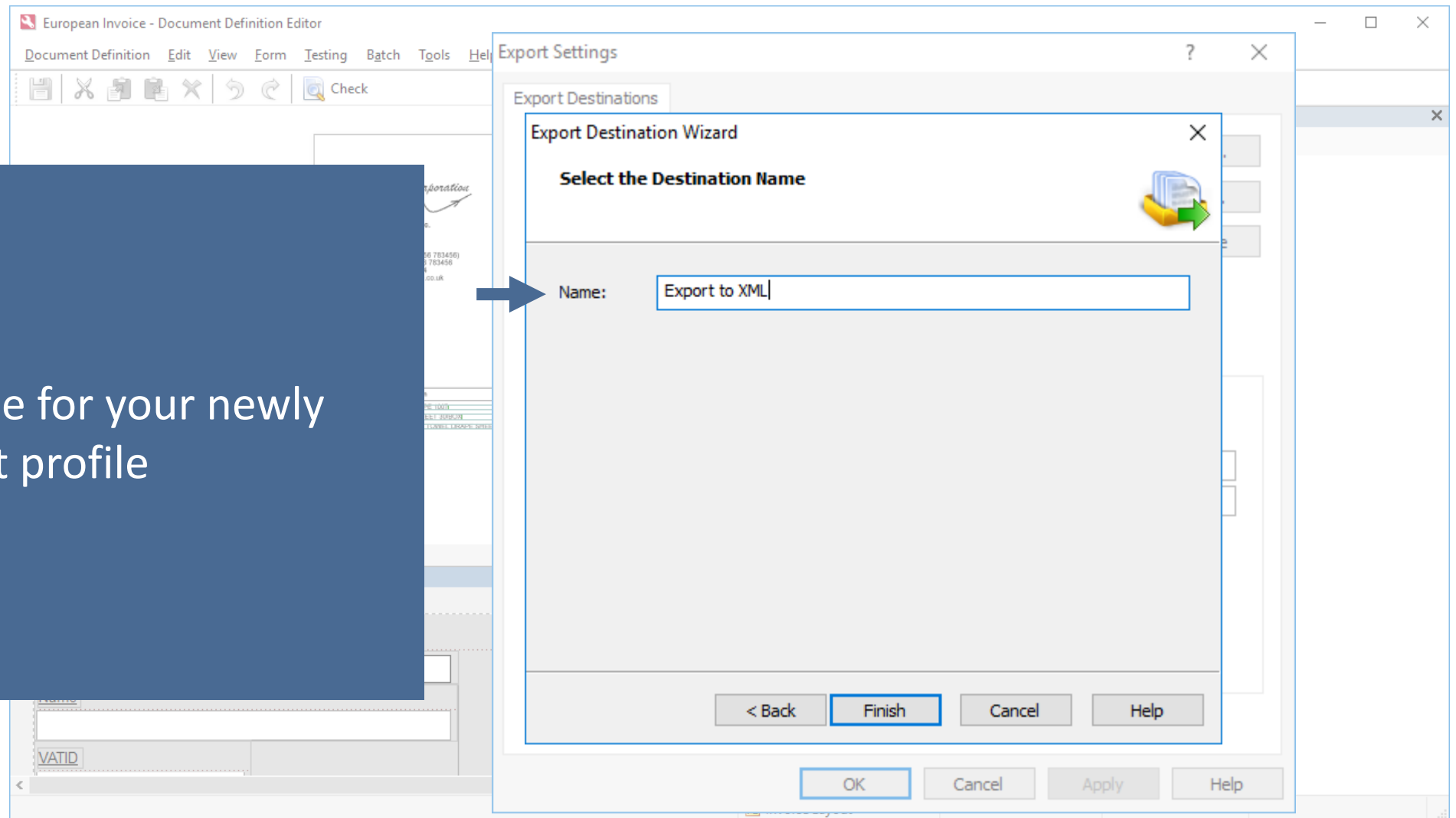
- Select the desired image file format options
- Click *Next*



Configure standard XML export profile

Step 8

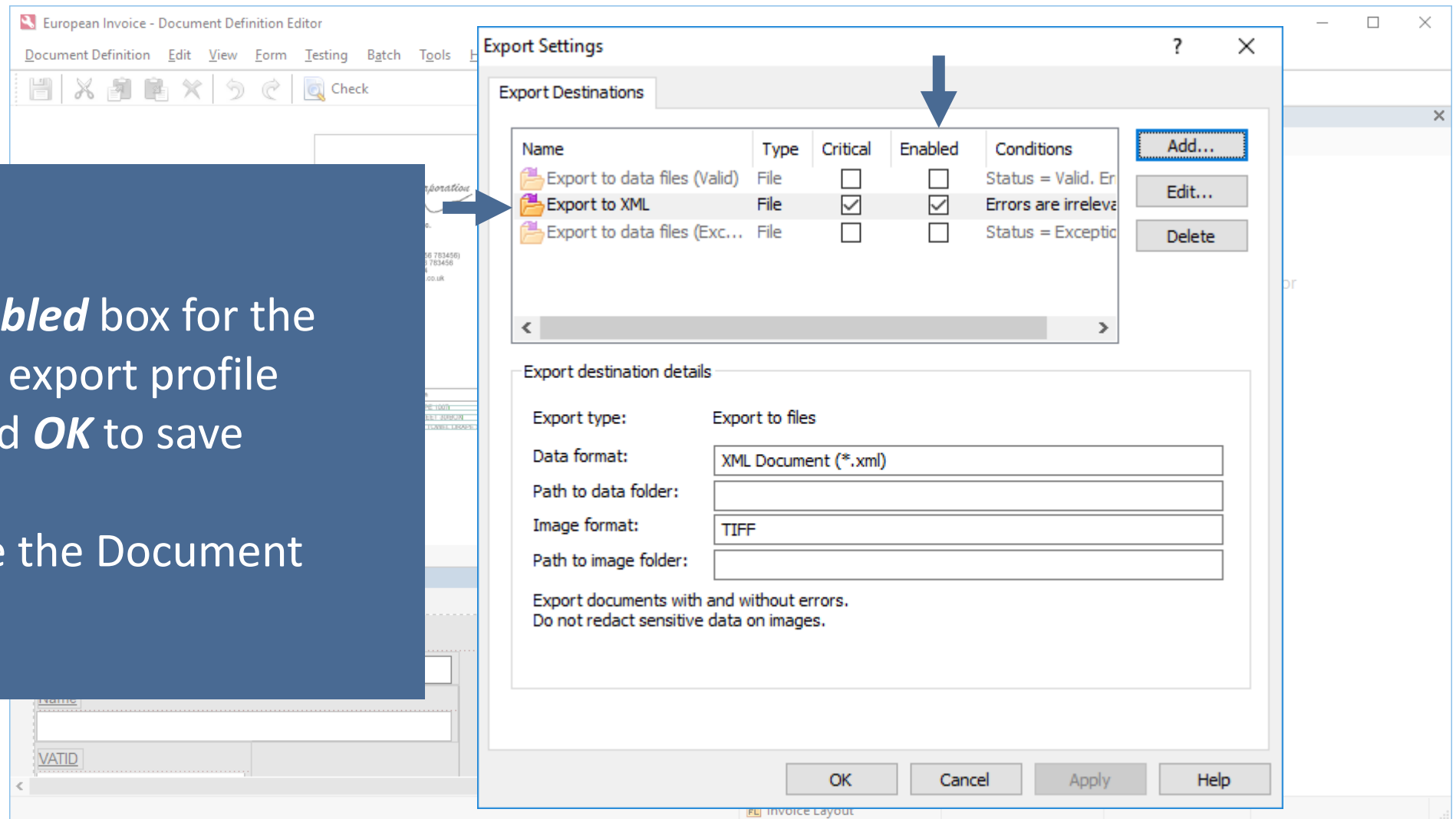
- Provide a name for your newly created export profile
- Click **Finish**



Configure standard XML export profile

Step 9

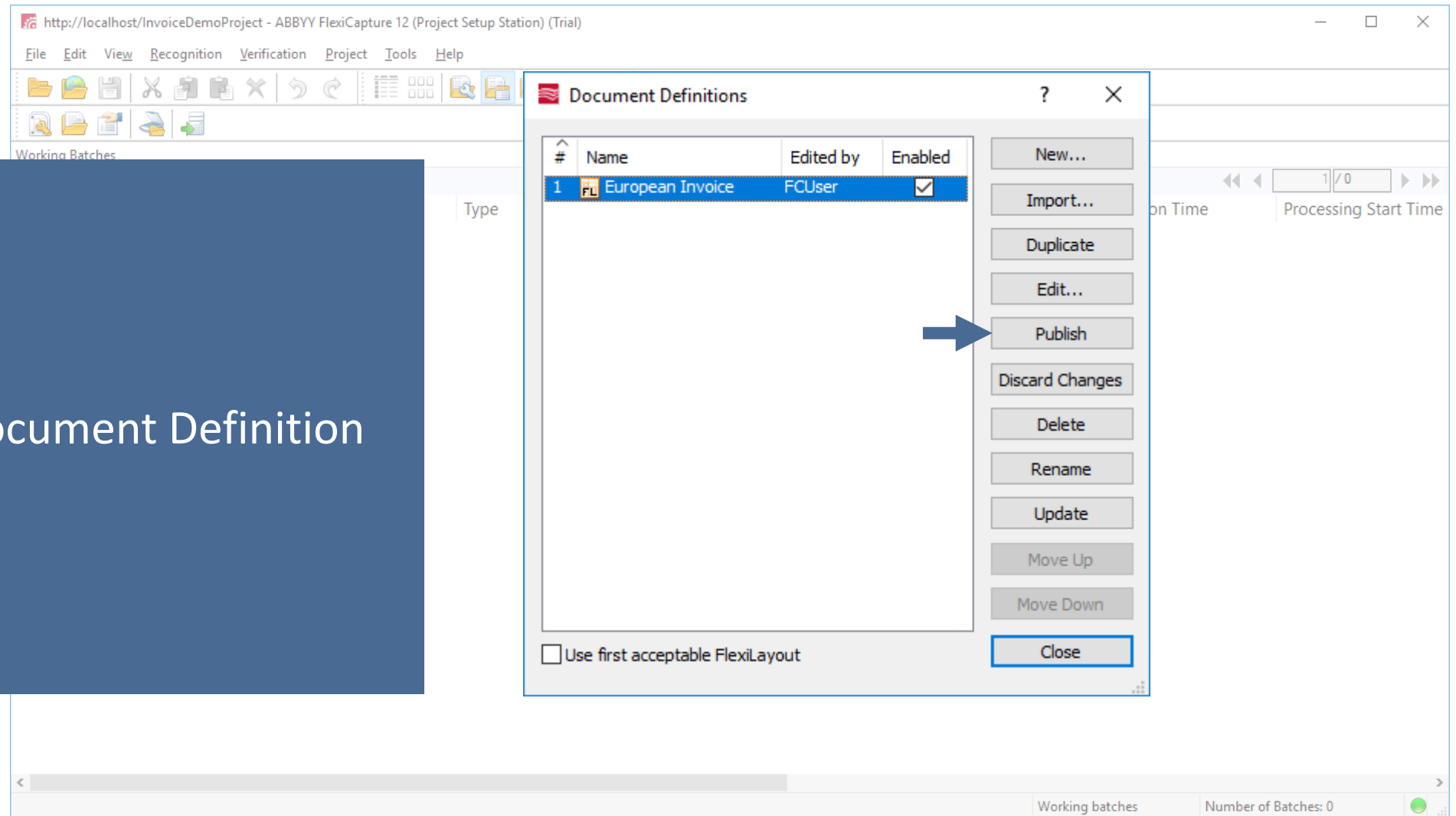
- Check the **Enabled** box for the newly created export profile
- Click **Apply** and **OK** to save changes
- Save and close the Document Definition



Configure standard XML export profile

Step 10

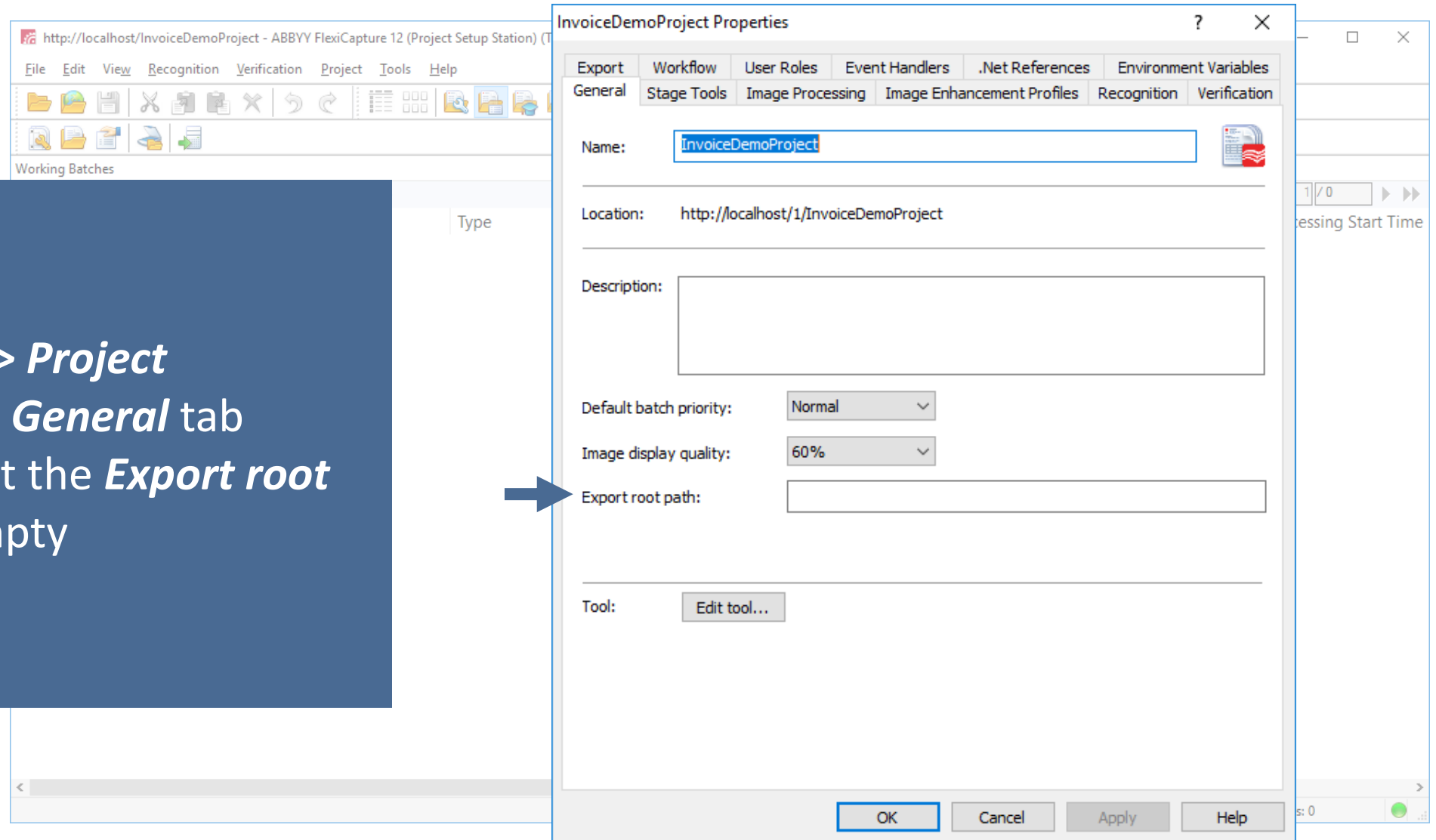
- Publish the Document Definition



Configure standard XML export profile

Step 11

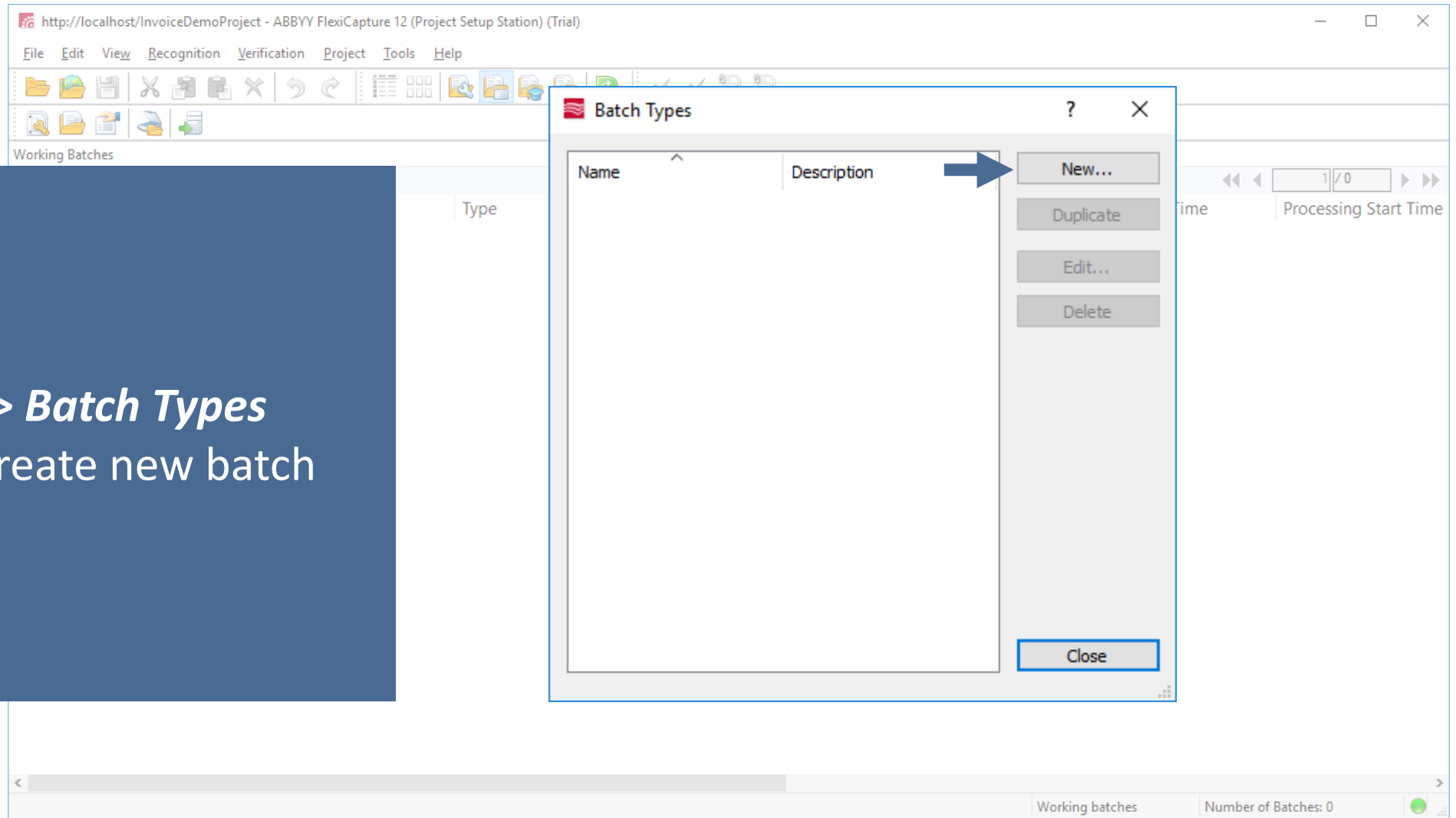
- Go to **Project > Project Properties... > General** tab
- Make sure that the **Export root path** is left empty



Unattended schema

Step 12

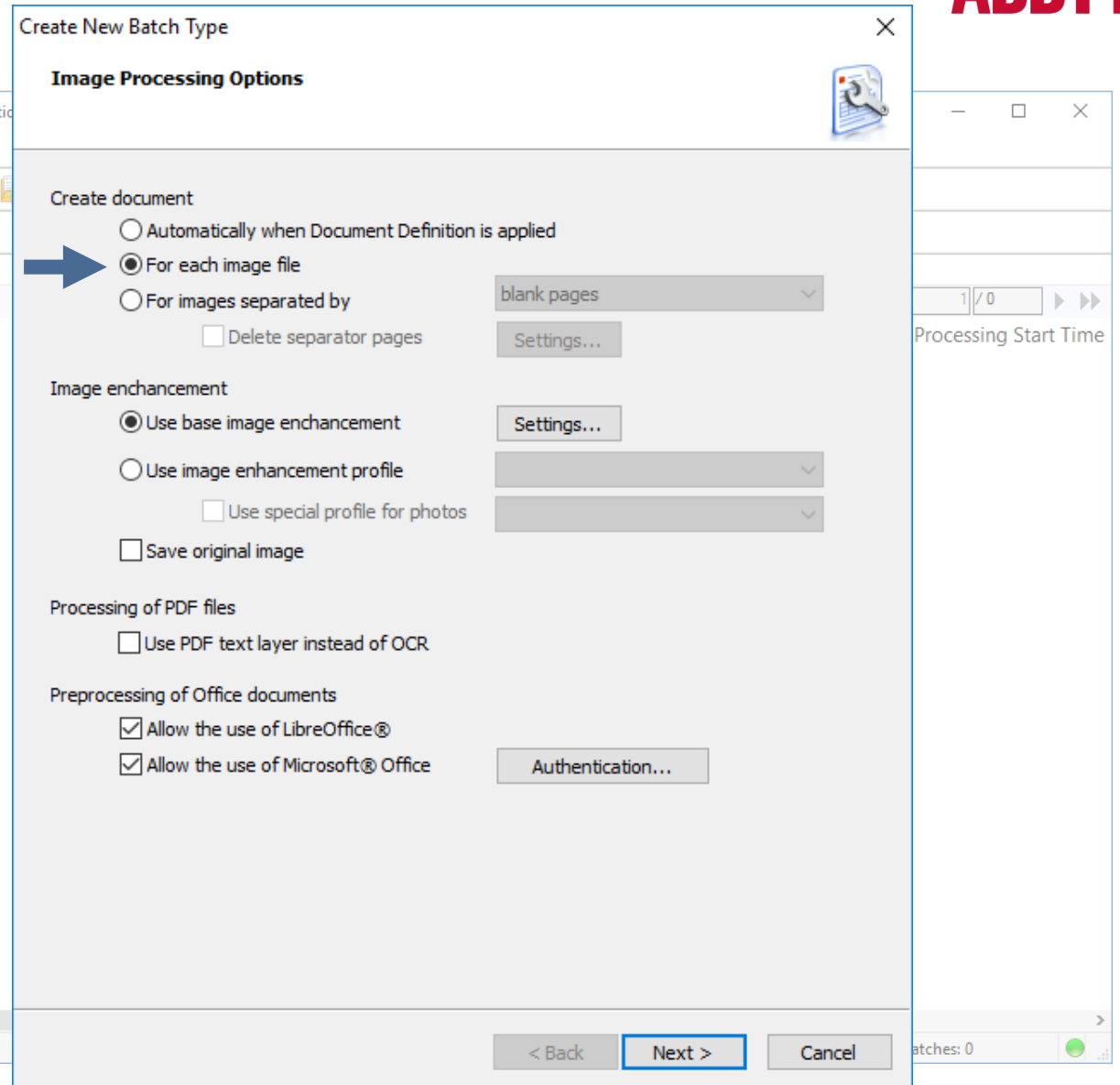
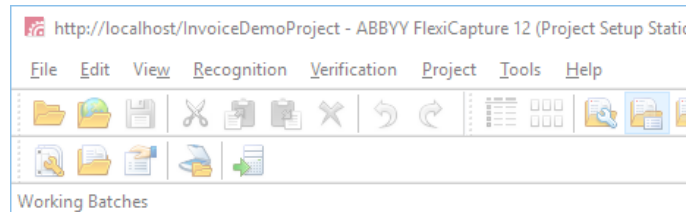
- Go to **Project > Batch Types**
- Click **New** to create new batch type



Unattended schema

Step 13

- Select Create document - *For each image file*
- Click *Next* until you get to *Workflow* settings



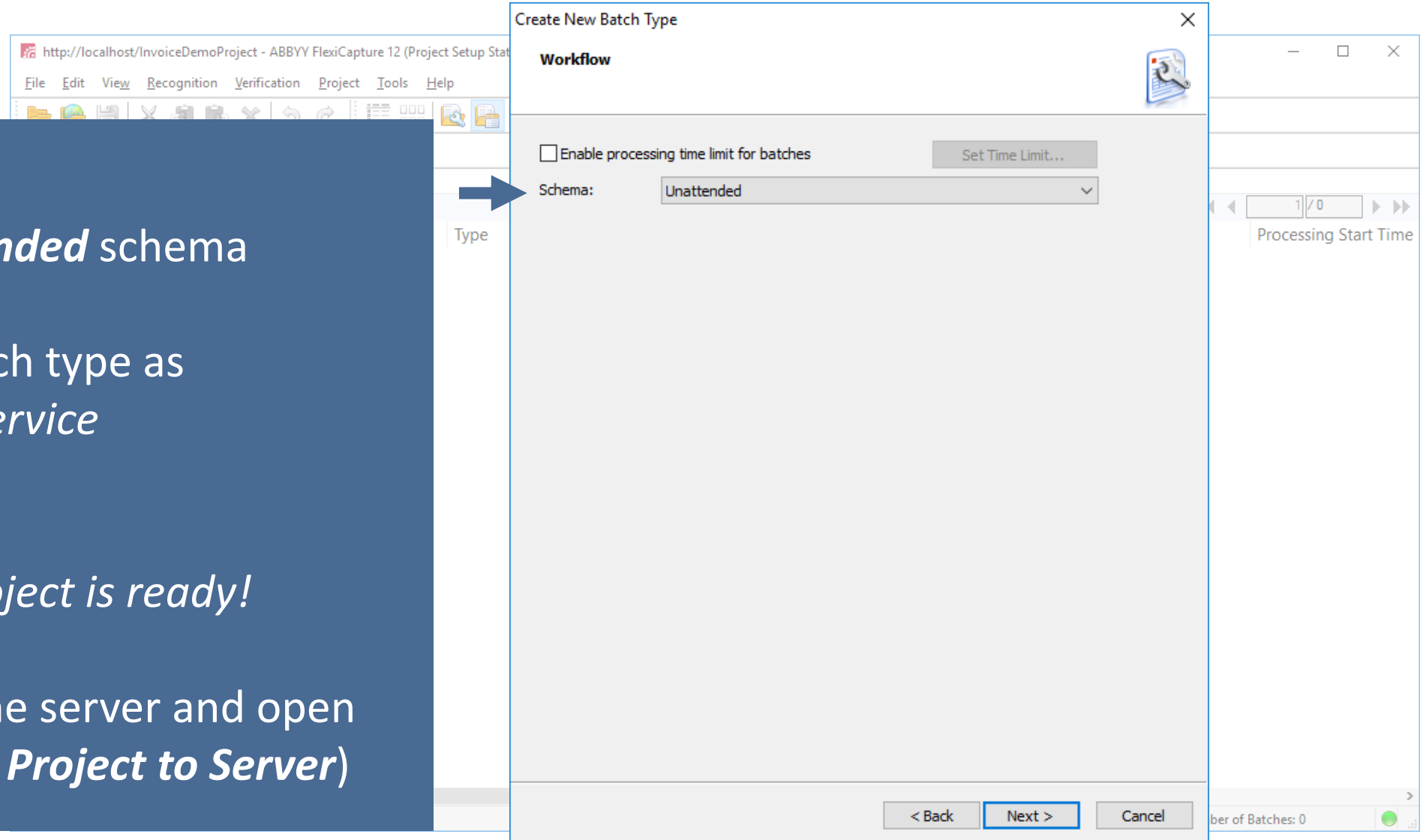
Unattended schema

Step 14

- Select ***Unattended*** schema
- Click ***Next***
- Name the batch type as ***Unattended service***
- Click ***Finish***

Now the project is ready!

- Upload it to the server and open (***File > Upload Project to Server***)



The background of the slide is a complex network diagram. It consists of numerous small black dots (nodes) connected by thin, light gray lines (edges). The nodes are distributed across the entire page, with a higher density in the top and bottom sections. A central horizontal band is filled with a solid dark blue color, which serves as a background for the text.

For details, see the Administrator's Guide