

ABBYY® FineReader 11
Corporate Edition
System Administrator's Guide

Information in this document is subject to change without notice and does not bear any commitment on the part of ABBYY.

The software described in this document is supplied under a license agreement. The software may only be used or copied in strict accordance with the terms of the agreement. No part of this document may be reproduced or transmitted in any form or by any means, electronic or other, for any purpose, without the express written permission of ABBYY.

© 2012 ABBYY. All rights reserved.

ABBYY, the ABBYY logo, ABBYY FineReader, ADRT are either registered trademarks or trademarks of ABBYY Software Ltd.

© 1984–2008 Adobe Systems Incorporated and its licensors. All rights reserved.

Protected by U.S. Patents 5,929,866; 5,943,063; 6,289,364; 6,563,502; 6,185,684; 6,205,549; 6,639,593; 7,213,269; 7,246,748; 7,272,628; 7,278,168; 7,343,551; 7,395,503; 7,389,200; 7,406,599; 6,754,382; Other Patents Pending.

Adobe® PDF Library is licensed from Adobe Systems Incorporated.

Adobe, Acrobat®, the Adobe logo, the Acrobat logo, the Adobe PDF logo and Adobe PDF Library are either registered trademarks or trademarks of Adobe Systems Incorporated in the United States and/or other countries.

© 1996–2007 LizardTech, Inc. All rights reserved. DjVu® is protected by U.S. Patent No. 6,058,214. Foreign Patents Pending.

© 2008 Celartem, Inc. All rights reserved.

© 2011 Caminova, Inc. All rights reserved.

Powered by AT&T Labs Technology.

© 2011 University of New South Wales. All rights reserved.

Fonts Newton, Pragmatica, Courier © 2001 ParaType, Inc.

Font OCR-v-GOST © 2003 ParaType, Inc.

© 2002–2008 Intel Corporation.

© 2010 Microsoft Corporation. All rights reserved.

Microsoft, Outlook, Excel, PowerPoint, Windows Vista, Windows are either registered trademarks or trademarks of Microsoft Corporation in the United States and/or other countries.

© 1991–2008 Unicode, Inc. All rights reserved.

© 2010, Oracle and/or its affiliates. All rights reserved

OpenOffice.org, OpenOffice.org logo are trademarks or registered trademarks of Oracle and/or its affiliates.

JasPer License Version 2.0:

© 2001–2006 Michael David Adams

© 1999–2000 Image Power, Inc.

© 1999–2000 The University of British Columbia

© 1996–2011, Amazon.com, Inc. or its affiliates. All rights reserved.

EPUB® is a registered trademark of the IDPF (International Digital Publishing Forum)

iPad® is a trademark of Apple Inc., registered in the U.S. and other countries.

All other trademarks are the sole property of their respective owners.

Table of Contents

Deploying ABBYY FineReader 11 in a LAN	3
Deploying ABBYY FineReader 11	3
Step 1. Administrative installation.....	5
Installing the License Server and the License Manager	5
Creating an administrative installation point	6
Step 2. Managing Licenses.....	7
Step 3. Installing ABBYY FineReader 11 on Workstations	8
Interactive installation	8
Command line installation.....	8
Using Active Directory	10
Using Microsoft System Center Configuration Manager (SCCM)	15
Using Task Scheduler.....	19
Installing ABBYY FineReader 11 on a Terminal Server	20
Setting Up Windows RemoteApp	20
Setting Up Citrix XenApp	21
Frequently Asked Questions	23
How can I change the network connection settings?	23
How can I repair ABBYY FineReader 11 on the workstations?.....	24
How can I rename the computer hosting the License Server or move the License Server to another computer?	24
Group Work in a LAN	26
Processing the same ABBYY FineReader document on several computers	26
Using the same user languages and dictionaries on several computers	26
Technical Support.....	28

Deploying ABBYY FineReader 11 in a LAN

General

ABBYY FineReader 11 can be installed and used on a local area network.

The automated installation methods give you speed and flexibility when installing ABBYY FineReader 11 Corporate Edition on a local area network, as you do not have to install the program manually on each individual workstation.

Deploying ABBYY FineReader 11

ABBYY FineReader can be deployed from any computer running under Microsoft® Windows® XP (or later).

The deployment process comprises the following steps:

1. Administrative installation

- a. Installing ABBYY FineReader 11 CE License Server and ABBYY FineReader 11 CE License Manager

For detailed instructions, see [Installing the License Server and the License Manager](#).

Note: The computer on which ABBYY FineReader 11 CE License Manager is installed becomes a License Administrator Station.

- b. Creating an administrative installation point

For detailed instructions, see [Creating an administrative installation point](#).

Note: You can change the network connection settings used by the License Server, the License Manager, and the workstations. For details, see [How can I change the network connection settings?](#)

Note. The administrative installation point and the License Server can be located either on the same or on different computers.

2. Managing the licenses

Licenses are managed by means of ABBYY FineReader 11 License Manager.

For the licenses to be correctly distributed among the workstations when installing ABBYY FineReader 11, you must give certain workstations priority in obtaining certain licenses. For this purpose, reserve licenses and pools of licenses for certain workstations.

For details, see [Step 2. Managing Licenses](#).

3. Installing ABBYY FineReader on workstations using one of the following methods:

- manually in interactive mode
- via the command line
- Active Directory
- Microsoft System Center Configuration Manager (SCCM),
- Task Scheduler

For detailed instructions, see [Step 3. Installing ABBYY FineReader 11 on Workstations](#).

Important!

1. Do not place the License Server into the same folder with the administrative installation point.
2. You cannot install different editions of ABBYY FineReader on the same workstation.

Administrative installation folder requirements

1. 750 MB free hard-disk space to create an administrative installation point
2. Read access to the administrative installation folder (e.g. **\\MyFileServer\Programs Distributions\ABBYY FineReader 11**) for all users on whose computers ABBYY FineReader is to be installed.
3. The server (**\\MyFileServer**) on which the administrative installation point is created must be a file server running under any operating system that supports long file names.
4. When using Active Directory® to deploy ABBYY FineReader 11, the Domain Computers accounts must have read permissions for the administrative installation folder.

License Server requirements

1. 100 MB free hard-disk space to create license files and accounts.
2. The server (**\\MyLicenseServer**) on which the License Server is installed must run under Microsoft Windows XP, Microsoft Windows Server 2003, Microsoft Windows Vista, Microsoft Windows 7, Microsoft Windows Server 2008 or Microsoft Windows Server 2008 R2.
3. The number of connections supported by the operating system of the License Server must be at least equal to the total number of potential users of the program (only for Concurrent licenses). Microsoft Windows XP, for example, allows no more than 10 simultaneous connections, allowing to run ABBYY FineReader only on 10 workstations at a time.

License Administrator Station requirements

1. PC running under Microsoft Windows XP, Microsoft Windows Server 2003, Microsoft Windows Vista, Microsoft Windows 7, Microsoft Windows Server 2008, Microsoft, or Windows Server 2008 R2.
2. 100 MB free hard-disk space.

Workstation requirements

1. 1-GHz or faster 32-bit (x86) or 64-bit (x64) CPU
2. Operating System: Microsoft Windows XP, Microsoft Windows Server 2003, Microsoft Windows Vista, Microsoft Windows 7, Microsoft Windows Server 2008 or Microsoft Windows Server 2008 R2 (to work with localized interfaces, the operating system must support the corresponding language)
3. 1024 RAM; in multiprocessor systems, an additional 512 MB of RAM is required for each additional processor
4. 700 MB for installation of all program components; 700 MB for program operation
5. Video card and monitor supporting min. resolution of 1024*768
6. Keyboard and mouse or other pointing device

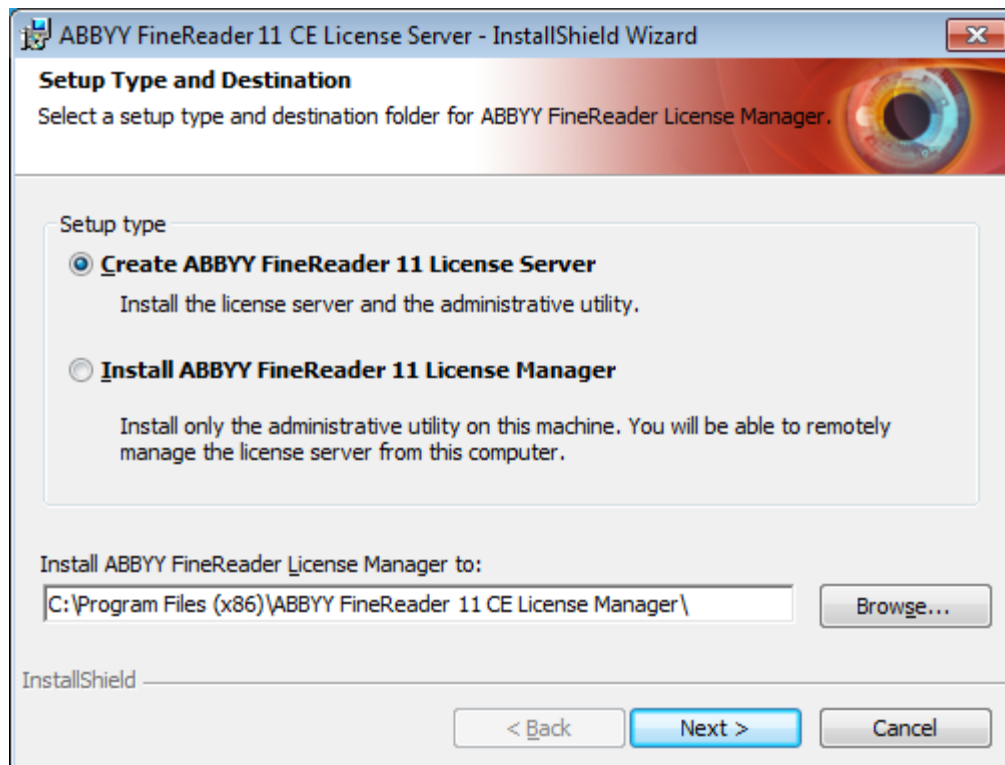
Step 1. Administrative installation

Installing the License Server and the License Manager

1. Place the setup disk into the CD-ROM drive. The setup program will start automatically.
Note: If the setup program does not start automatically, run the file **License Server\Setup.exe** from the ABBYY FineReader 11 CD-ROM.
2. Select **Deploy ABBYY FineReader in LAN> Install ABBYY FineReader License Server**.
3. Follow the instructions of the setup program.

During setup, you can:

- Install ABBYY FineReader License Server and ABBYY FineReader License Manager. The License Server and the License Manager will be installed on the same computer. You can specify a folder into which the License Manager is to be installed.
- Install only ABBYY FineReader 11 License Manager. You will need to specify a folder into which the License Manager is to be installed and specify the name of the computer hosting the License Server.



Note:

- If several users will be managing the ABBYY FineReader 11 licenses, they must have the License Manager utility installed on their computers.
- Each user must be a member of one of the two local groups on the server:
 1. ABBYY Licensing Administrators
 2. BUILTIN\Administrators

You can disable user authorization in the file

%programfiles%\Common Files\ABBYY\FineReader\11.00\Licensing\CE\NetworkLicenseServer.ini

This file is located on the computer where the License Server has been installed. Add the following parameter to this file:

[Licensing]

EnableManagerAuthorization = false

Important! For the changes to take effect, you must restart the ABBYY FineReader 11 CE Licensing Service.

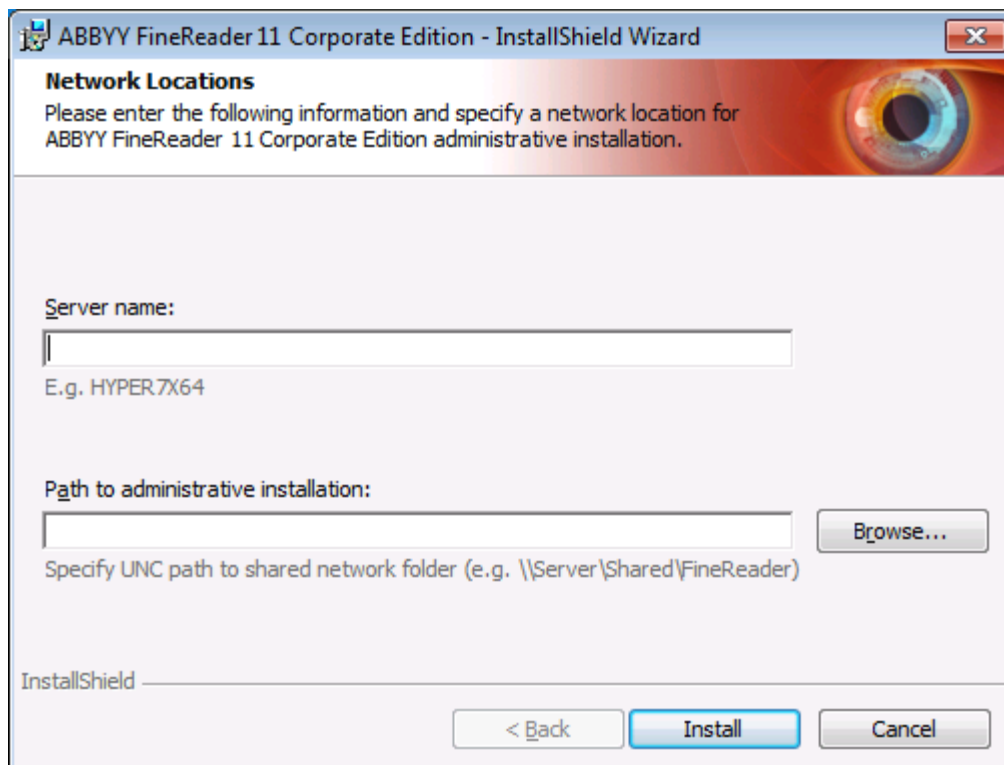
Creating an administrative installation point

1. Place the setup disk into the CD-ROM drive. The setup program will start automatically.
Note: If the setup program does not start automatically, run the **AdminSetup.exe** file from the ABBYY FineReader 11 CD-ROM.
2. Select **Deploy ABBYY FineReader in LAN > Create administrative installation point**.
3. Follow the instructions of the setup program.

When the setup program prompts you, specify the following:

- The name of the computer where the License Server is to be installed
- The path to the administrative installation folder

Important! Avoid moving the administrative installation folder after ABBYY FineReader is installed on the workstations.



The screenshot shows a Windows dialog box titled "ABBYY FineReader 11 Corporate Edition - InstallShield Wizard". The dialog is in the "Network Locations" step, which prompts the user to "Please enter the following information and specify a network location for ABBYY FineReader 11 Corporate Edition administrative installation." The dialog contains two input fields: "Server name:" with a text box and a hint "E.g. HYPER.7X64", and "Path to administrative installation:" with a text box and a "Browse..." button. Below the text boxes is the text "Specify UNC path to shared network folder (e.g. \\Server\Shared\FineReader)". At the bottom of the dialog are three buttons: "< Back", "Install", and "Cancel". The "Install" button is highlighted in blue.

Step 2. Managing Licenses

ABBYY FineReader 11 License Manager is a special application provided with ABBYY FineReader 11 and intended for managing ABBYY FineReader licenses. The application is installed on the License Administration Station when ABBYY FineReader 11 is deployed in a local area network (see [Installing the License Server and the License Manager](#) for details).

Configure your licenses with ABBYY FineReader 11 License Manager:

- 1) **Add your licenses to ABBYY FineReader 11 License Manager.**
An ABBYY FineReader 11 license (or group of licenses) has a unique serial number which identifies it. To activate a license and add it to ABBYY FineReader 11 License Manager, you must activate its serial number.
- 2) **Create license pools and add the necessary licenses to the pools.**
A pool of licenses is a set of licenses or serial numbers of equal standing. License pools make working with licenses easier. For example, instead of reserving each license separately, you can add it into a pool and then reserve the pool for certain workstations.
- 3) **Reserve the pools and licenses for the appropriate workstations.**
Before you install ABBYY FineReader 11 on the workstations, you must distribute the licenses among the workstations, i.e. reserve them for the appropriate workstations by means of ABBYY FineReader 11 License Manager. Once a license is reserved for a workstation, only that workstation will be able to use the license.

Important! Reserve licenses and pools before you start installing ABBYY FineReader 11 on the workstations. To bind or unbind a workstation after ABBYY FineReader has been installed on it, you will need to remove the program from the workstation. To move a per-seat license from one workstation to another after ABBYY FineReader has been installed, you will need to deactivate the license. The number of allowed deactivations is limited.

For more information about license types and about working with ABBYY FineReader 11 License Manager, see the ABBYY FineReader 11 License Manager help file.

Step 3. Installing ABBYY FineReader 11 on Workstations

Important! Before installing ABBYY FineReader 11 on the workstations, be sure to complete Steps 1 and 2 (see [Step 1. Administrative installation](#), [Step 2. Managing Licenses](#)).

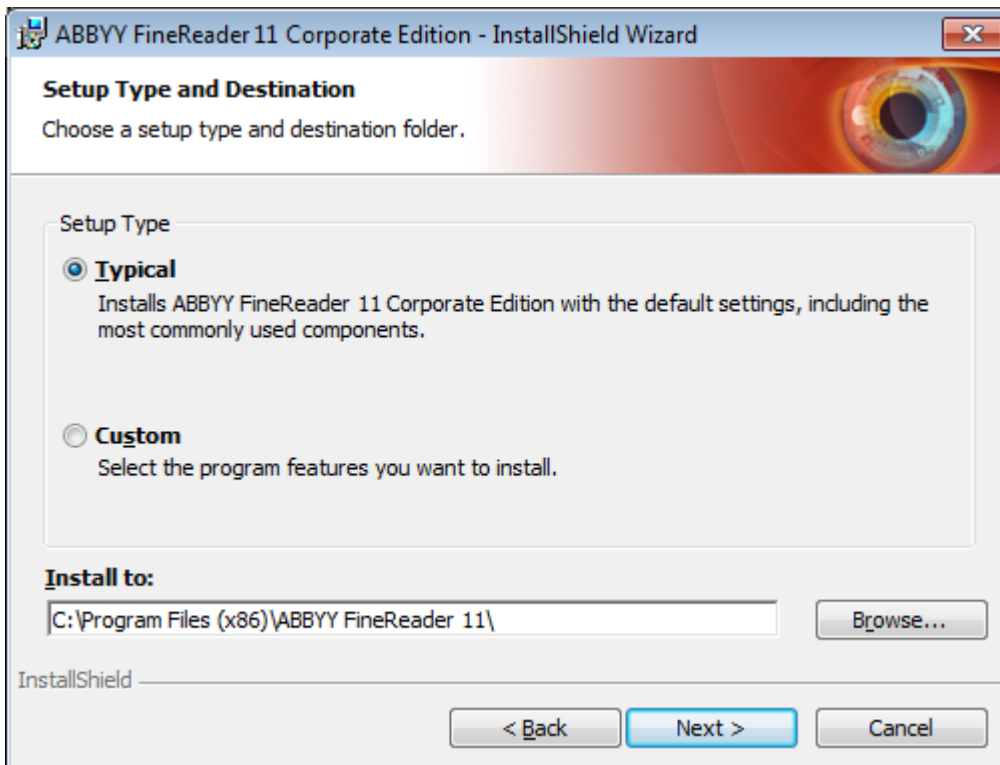
A workstation obtains a per-seat license and is bound to the server only when ABBYY FineReader 11 is installed on it in accordance with the configuration of the licenses at the time of the installation.

Note:

- You cannot install different editions of ABBYY FineReader on the same workstation.
- If a workstation was cloned from another machine, you must change the value of the Security Identifier (SID) before installing ABBYY FineReader to avoid malfunctions of the licensing mechanism.

Interactive installation

1. Perform administrative installation of ABBYY FineReader 11 (see [Step 1. Administrative installation](#) for details).
2. Run the **setup.exe** file in the administrative installation folder.



3. Follow the instructions of the setup wizard.

Command line installation

1. Perform administrative installation of ABBYY FineReader 11 (see [Step 1. Administrative installation](#) for details).
2. Run the **setup.exe** file in the administrative installation folder using the command line parameters described below.

Advertise installation

For advertise installation, type

Setup.exe /j

The program icon will appear in the **Start** menu of the workstation. Clicking this icon automatically installs the program in default configuration (the interface language is selected automatically based on the regional settings of the computer).

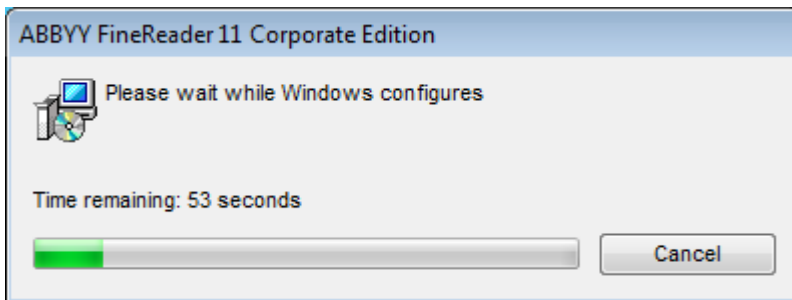
Silent installation

For silent installation, type

Setup.exe /qn

In the case of silent installation, no set-up dialog boxes are displayed and the program is installed in default configuration (the interface language is selected automatically based on the regional settings of the computer).

Note: Change `"/qn"` to `"/qb"` if you want an installation progress bar to be displayed. No other dialog boxes will be displayed.



Additional command-line options for silent installation

`/L<language code>` disables automatic selection of the interface language and installs ABBYY FineReader with the interface language specified in the command line.

Possible **language code*** values:

- 1026 Bulgarian
- 1028 Chinese (Traditional)
- 1029 Czech
- 1030 Danish
- 1031 German
- 1032 Greek
- 1033 English
- 1034 Spanish
- 1036 French
- 1038 Hungarian
- 1040 Italian
- 1041 Japanese
- 1042 Korean
- 1043 Dutch
- 1045 Polish
- 1046 Portuguese (Brazilian)
- 1049 Russian
- 1051 Slovak
- 1053 Swedish
- 1055 Turkish
- 1058 Ukrainian

1061 Estonian

2052 Chinese (Simplified)

*The number of available interface languages depends on the type of your distribution package.

/V"<command line>" passes the specified command line directly to **msiexec.exe**. Instead of the words "command line" you can specify the following:

INSTALLDIR="<destination path>" specifies the path to the folder where ABBYY FineReader 11 will be installed.

WEB_ALLOWED=<Yes or No> allows or prohibits sending information about the selected ABBYY FineReader settings to ABBYY over the Internet.

E.g.:

Setup.exe /qn /L1049 /v INSTALLDIR="C:\ABBYY FineReader 11" WEB_ALLOWED=Yes

This will install ABBYY FineReader 11 into C:\ABBYY FineReader 11. The menus, dialog boxes and other interface elements will be in Russian. Information about the selected ABBYY FineReader settings will be sent to ABBYY over the Internet. The set of available OCR languages depends on the type of the distribution package.

Uninstalling ABBYY FineReader 11 in silent mode

```
msiexec /x {F1100000-0003-0000-0000-074957833700}
```

Using Active Directory

Microsoft Windows Server 2003 and Microsoft Windows Server 2008 include an integrated directory service, **Active Directory**, which, in turn, includes **Group Policy**. The Software Installation snap-in, which is part of Group Policy, allows you to install a software application on several workstations simultaneously.

Three major installation methods are implemented in **Active Directory**:

- Publish to User
- Assign to User
- Assign to Computer

ABBYY FineReader 11 can be installed using the **Assign to Computer** method.

Important!

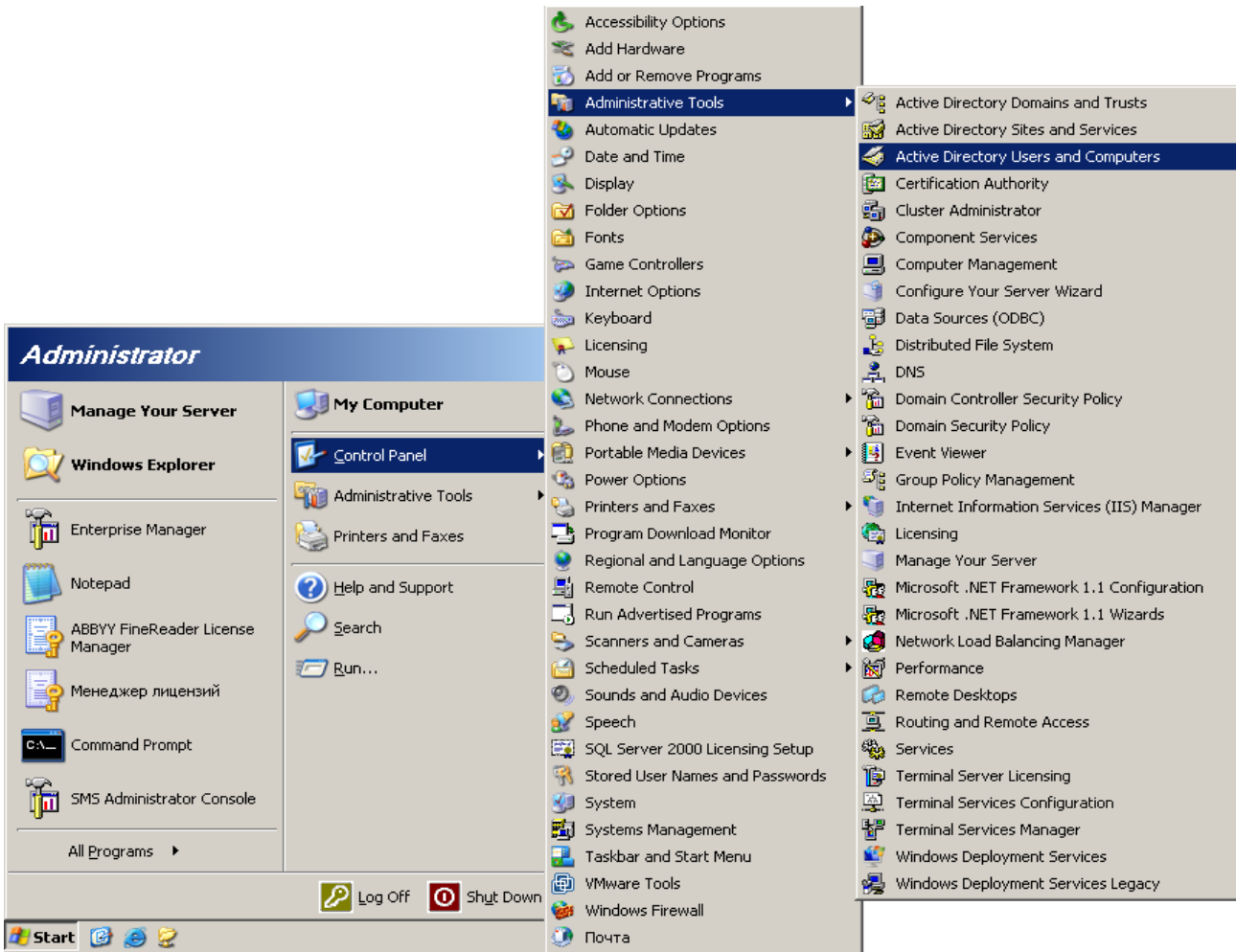
1. ABBYY FineReader 11 will be completely installed on a workstation only after the workstation is restarted.
2. The **Publish to User** and **Assign to User** methods are not supported.
3. ABBYY FineReader requires Microsoft Core XML Services (MSXML) 6.0 to be installed on the workstation.

Example: Using Active Directory to deploy ABBYY FineReader 11

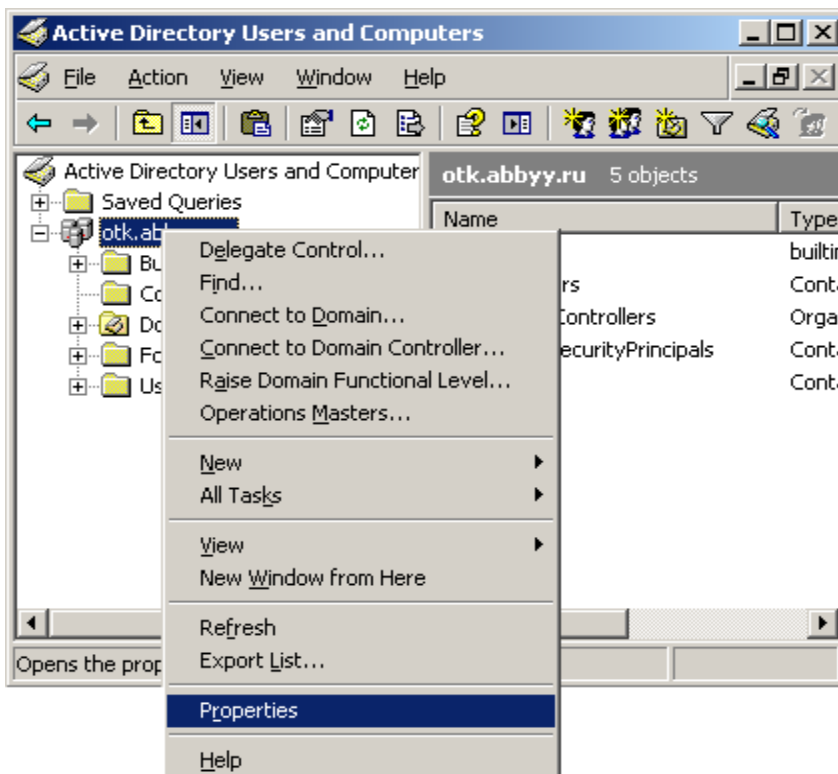
This example illustrates deployment under Microsoft Windows Server 2003 with Microsoft Group Management Console installed.

The program is installed on one domain computer or on a group of computers:

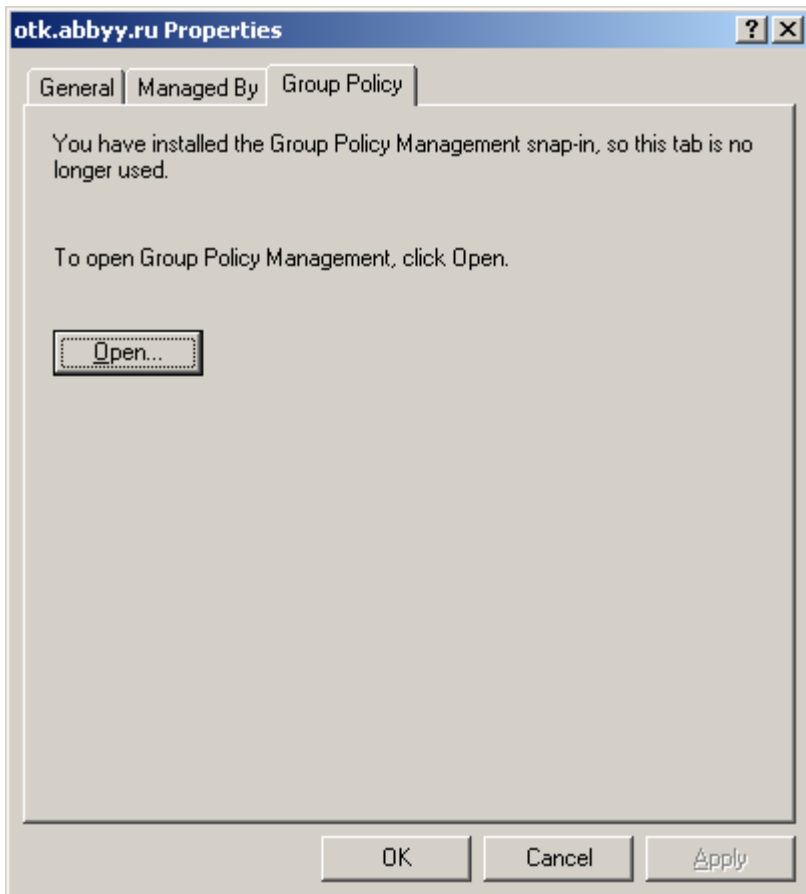
1. Perform administrative installation (see [Step 1. Administrative installation](#)).
2. Go to **Start>Control Panel>Administrative** and select **Active Directory Users and Computers**.



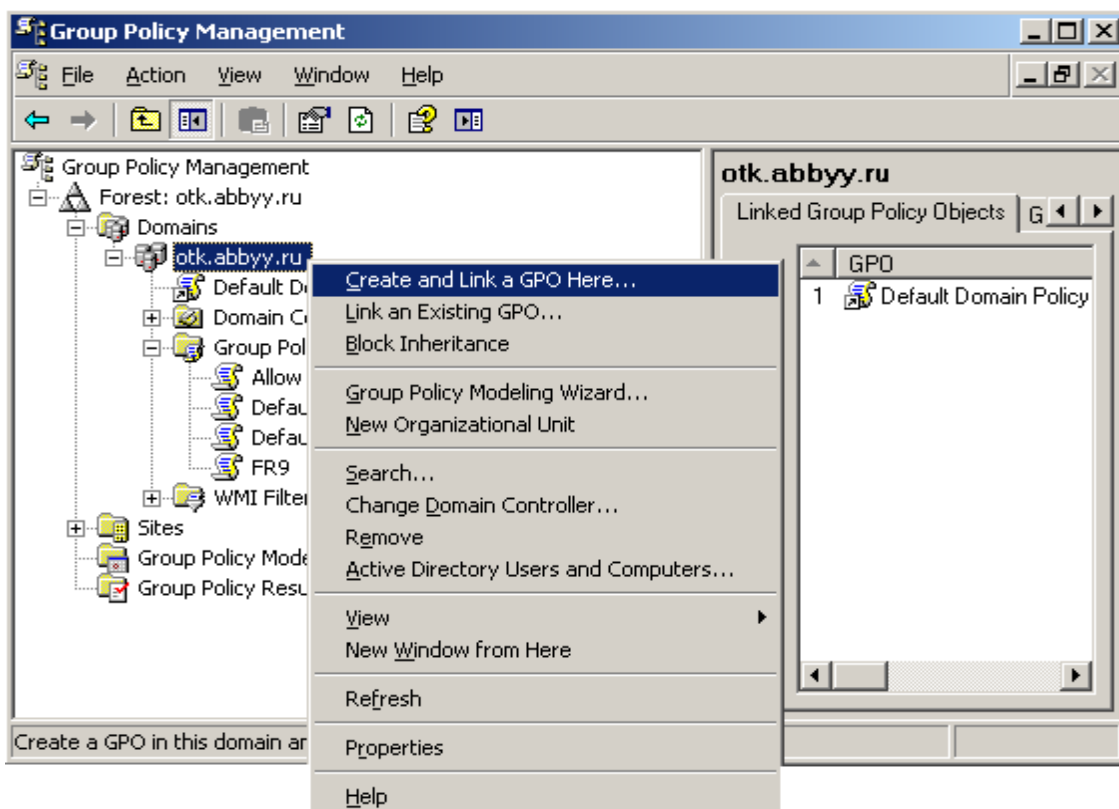
3. Right-click the site, domain, or another organized unit that contains the computer or group of computers onto which ABBYY FineReader 11 is to be installed.
4. On the shortcut menu, select **Properties**.



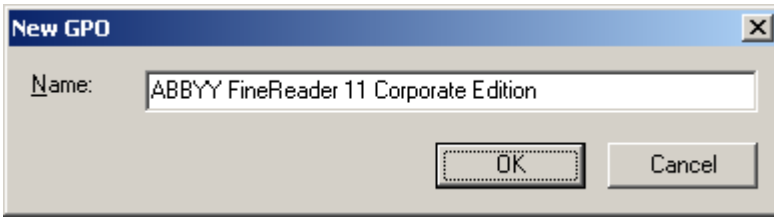
5. In the **Properties** dialog box, click the **Group Policy** tab and then click **Open...**



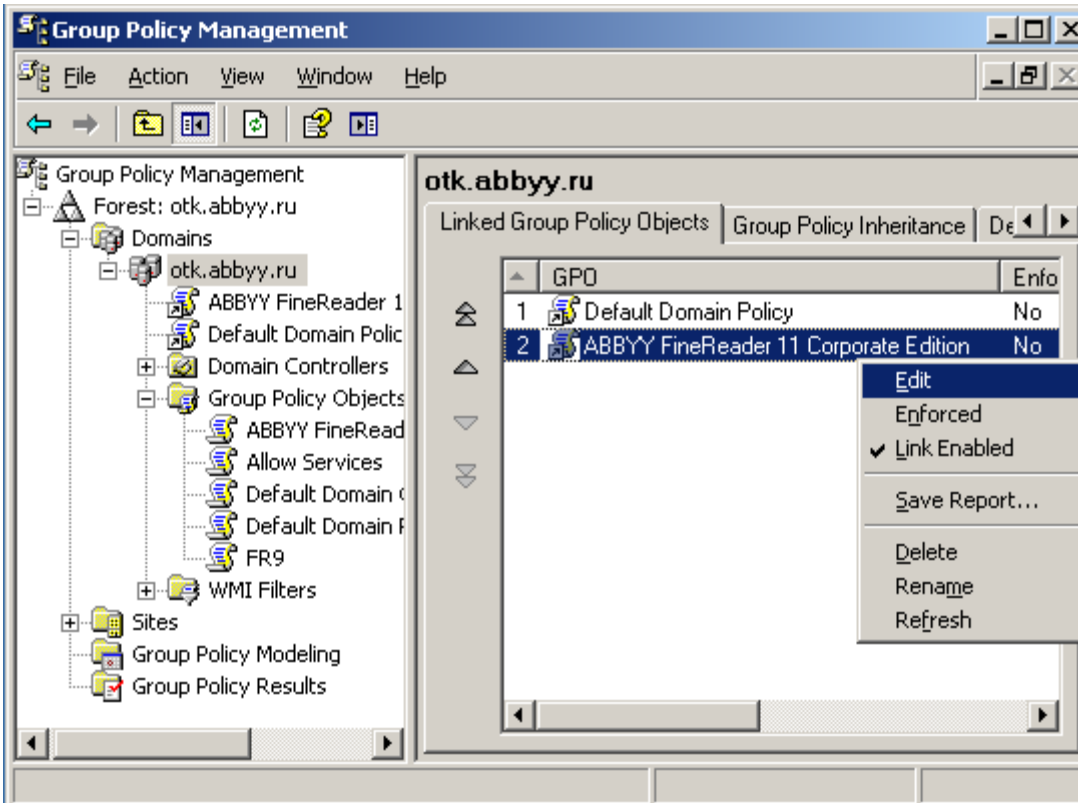
6. Right-click the organized unit that contains the computer or group of computers onto which ABBYY FineReader 11 is to be installed.
7. On the shortcut menu, select **Create and Link a GPO Here...**



8. Enter a descriptive name and click **OK**.

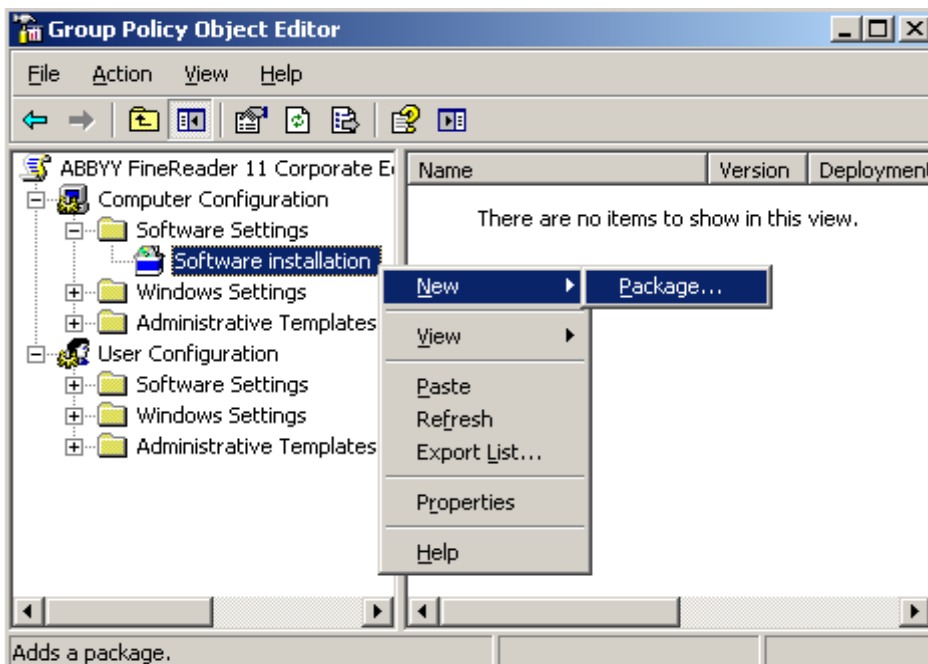


9. Right-click the **Group Policy** object you have created and select **Edit**.

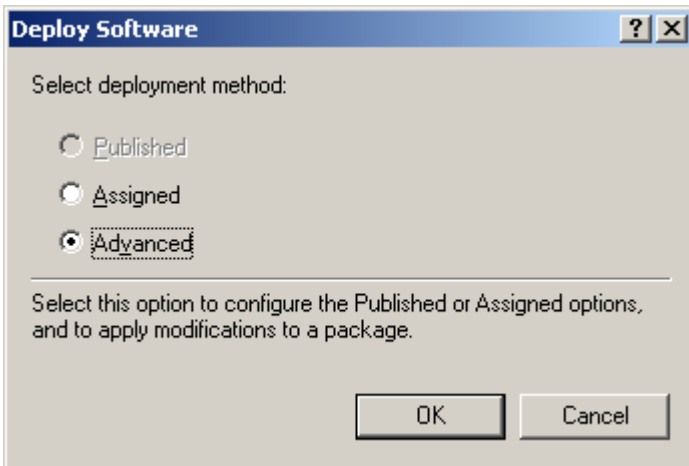


10. In the Group Policy Object Editor window, click **Computer Configuration > Software Settings > Software Installation**.

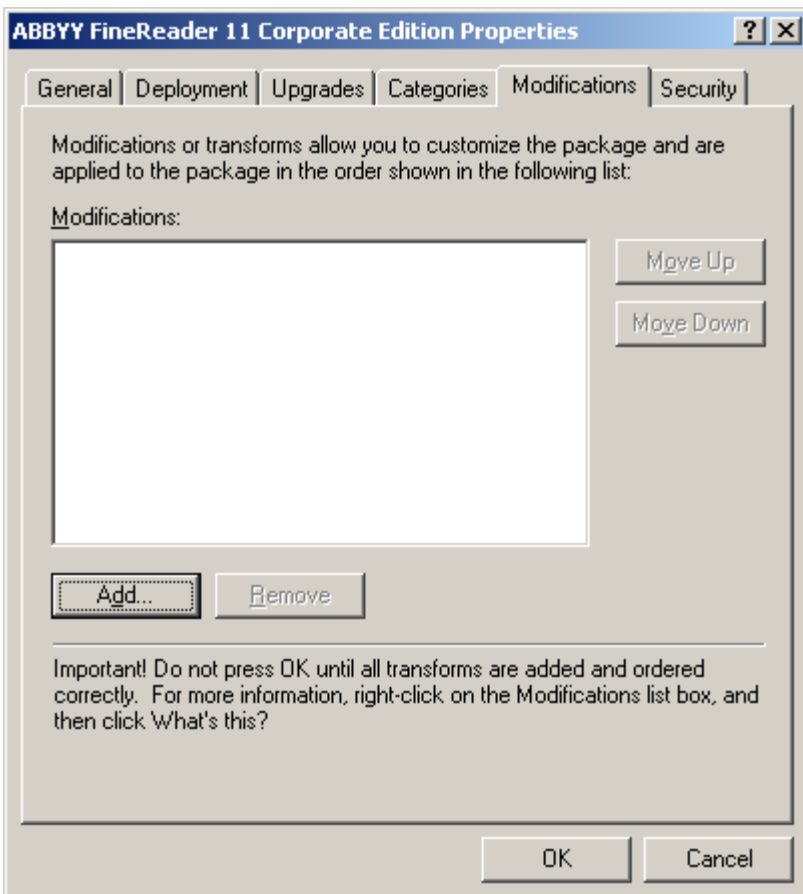
11. On the shortcut menu, select **New/Package...**



12. Provide the network path to the file **ABBYY FineReader 11 Corporate Edition.msi** that is located in the administrative installation folder on the server (see [Step 1. Administrative installation](#)).
13. Select the **Advanced** deployment method.



14. In the dialog box that opens, click the **Modifications** tab and then click the **Add...** button.



15. Select the interface language that will be used by ABBYY FineReader when installed on the workstations. The interface language files are located in the administrative installation folder on the server. File names and their languages:

1026.mst	Bulgarian
1028.mst	Chinese (Traditional)
1029.mst	Czech
1030.mst	Danish
1031.mst	German
1032.mst	Greek

1033.mst	English
1034.mst	Spanish
1036.mst	French
1038.mst	Hungarian
1040.mst	Italian
1041.mst	Japanese
1042.mst	Korean
1043.mst	Dutch
1045.mst	Polish
1046.mst	Portuguese (Brazilian)
1049.mst	Russian
1051.mst	Slovak
1053.mst	Swedish
1055.mst	Turkish
1058.mst	Ukrainian
1061.mst	Estonian
2052.mst	Chinese (Simplified)

E.g.: To install ABBYY FineReader with the Russian interface, select **1049.mst**.

Using Microsoft System Center Configuration Manager (SCCM)

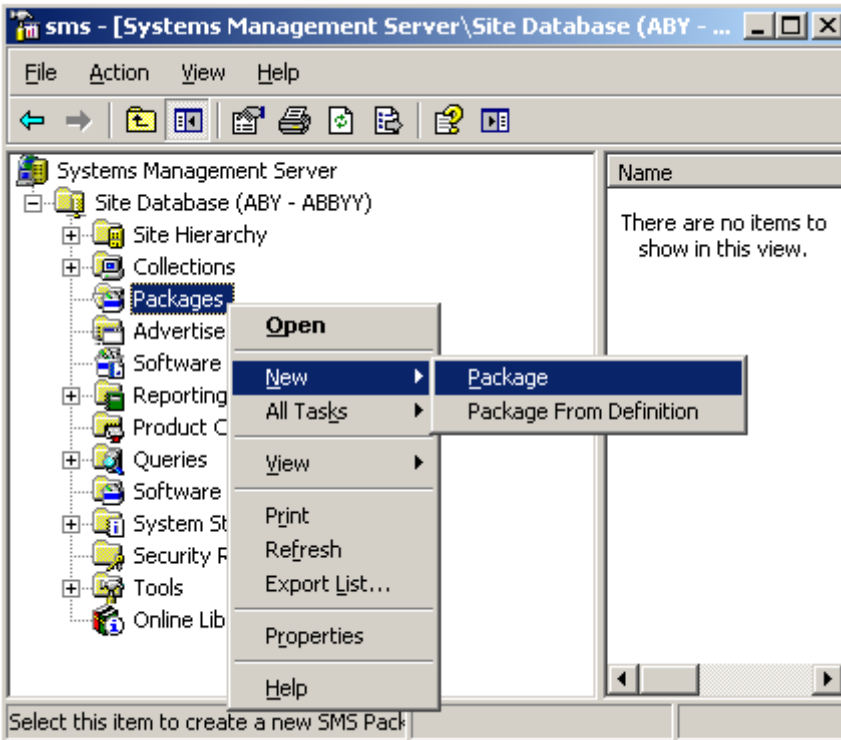
Microsoft System Center Configuration Manager automates software deployment in a local area network and eliminates the need to go directly to the locations where the software is to be installed (computers, groups, or servers).

Software deployment using SCCM comprises three stages:

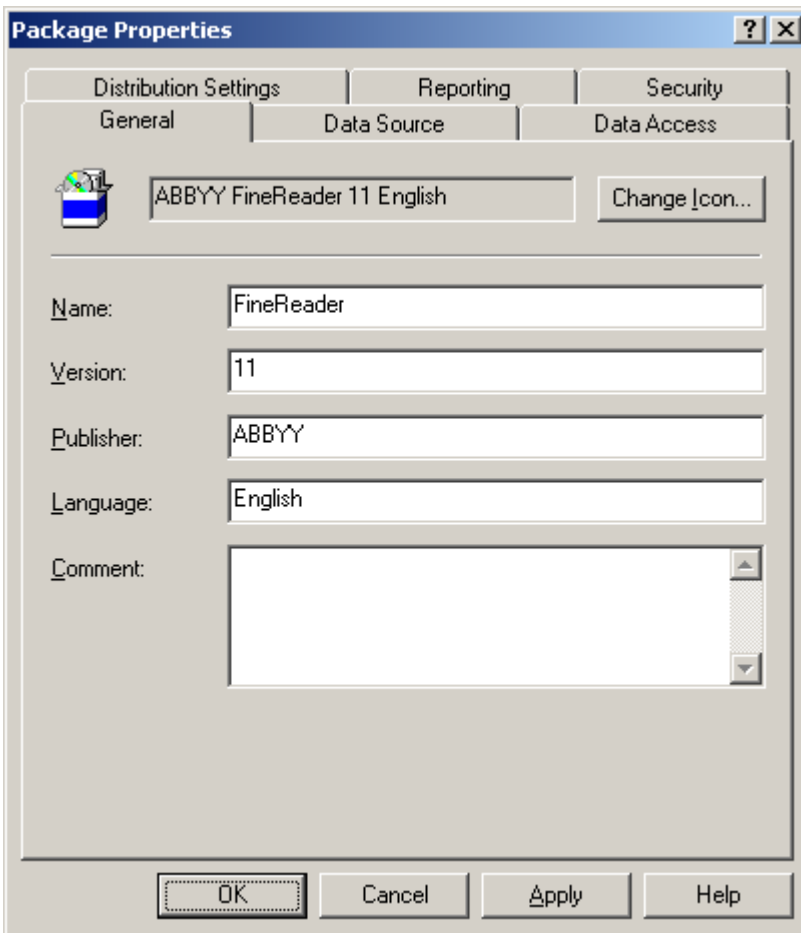
1. Preparing ABBYY FineReader 11 for automated installation (creating so-called "unattended setup").
2. Creating a deployment script, i.e. choosing installation parameters:
 - computer names
 - time of installation
 - conditions for installation
3. Installing the software on the specified computers by SCCM in accordance with the installation parameters specified in the script.

Example: Using SCCM to deploy ABBYY FineReader 11

1. Perform administrative installation (see [Step 1. Administrative installation](#)).
2. In the SCCM Administrator Console, select the **Packages** item.
3. In the **Action** menu, select **New>Package**.

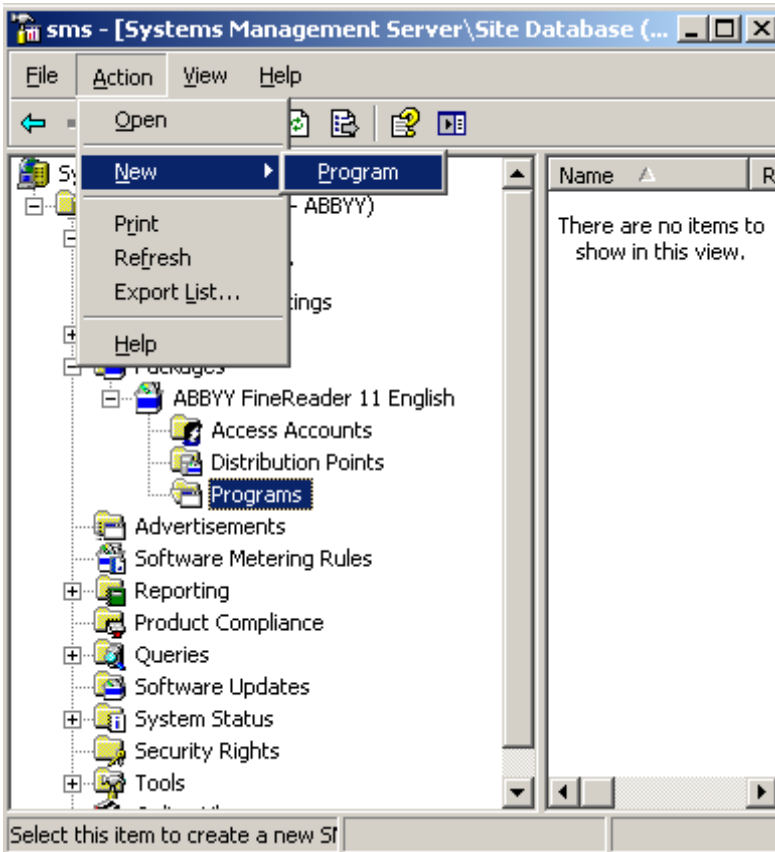


4. In the **Package Properties** dialog box that opens, enter the required package properties.



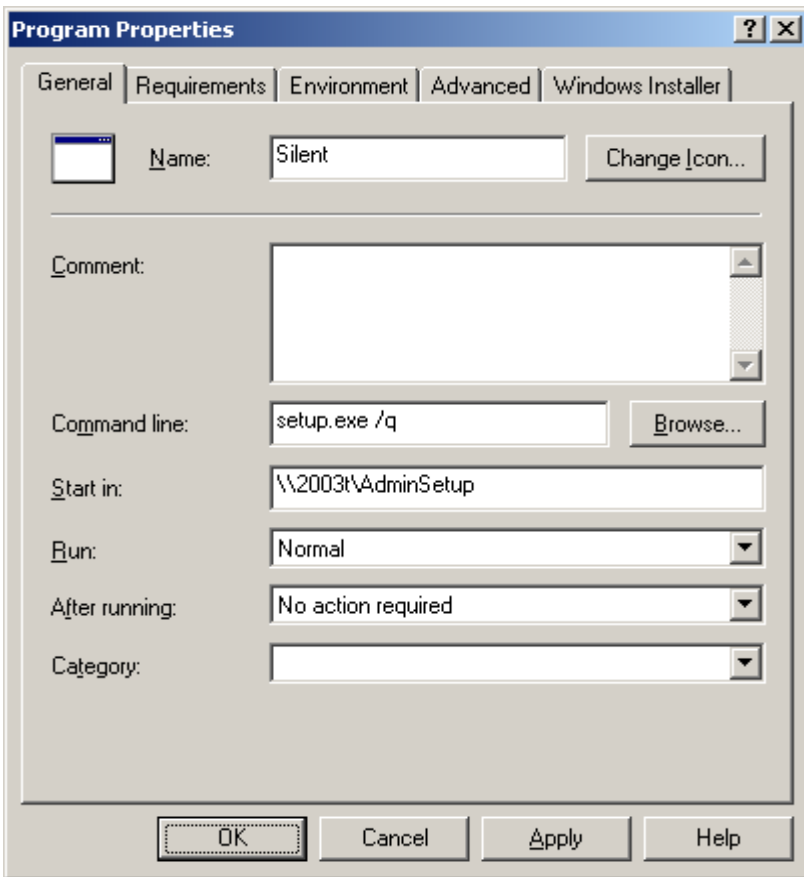
5. Click the **Data Source** tab.
6. Make sure that the **This package contains source files** box is not selected and click **OK**.
7. In the package you have just created, select **Programs**.

8. On the **Action** menu, select **New>Program**.

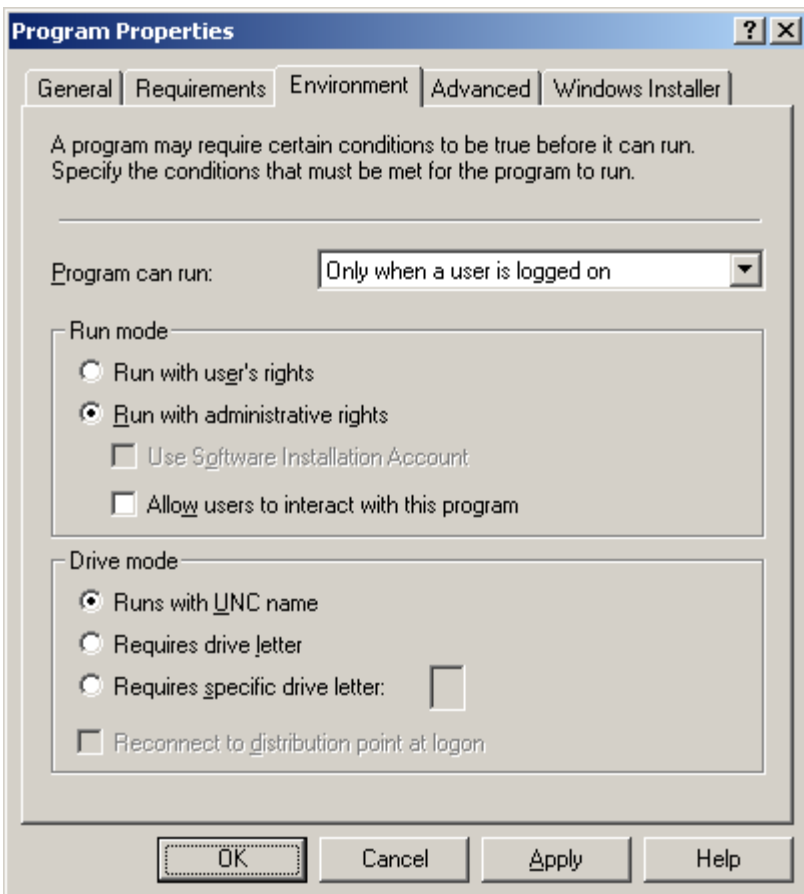


9. On the **General** tab of the **Program Properties** dialog box:

- Enter a descriptive name for the program in the **Name** field
- Type **setup.exe /q** in the **Command Line** field
- In the **Start in** field, enter the path to the administrative installation folder (e.g. **\\MyFileServer\Programs Distributions\ABBYY FineReader 11**)



10. On the **Environment** tab of the **Program Properties** dialog box:
- Select Run with administrative rights
 - Make sure that **Runs with UNC name** is selected



11. Change the condition in the **Program can run** field if required and click **OK**.
12. You can also use the **Distribute Software Wizard**. To run the wizard, on the **Action** menu, select **All Tasks>Distribute Software** and follow the instructions of the wizard.

Important! You cannot create Distribution Points.

Using Task Scheduler

To install ABBYY FineReader on workstations using Task Scheduler:

1. Perform administrative installation (see [Step 1. Administrative installation](#)).
2. Make sure that Task Scheduler is running on the workstation, that a user with local administrator rights is registered on the workstation, and that this user has access rights to the administrative installation folder and to ABBYY FineReader 11 License Server.
3. Create a new task on the workstation:
 - Specify the following parameters on the **Task** tab:
 - **Run** field: "**\\MyFileServer\Programs Distributions\ABBYY FineReader 11\setup.exe**"
/qn /L1033.For a detailed treatment of the parameters, see [Command line installation](#).
 - **Run as** field: **DOMAIN>Login**
 - In the **Set Password** dialog box, specify a password.
 - Make sure that the **Enabled** option is selected.

Note: **DOMAIN>Login** refers to the administrator of the workstation where ABBYY FineReader will be installed.

4. On the **Schedule** tab, specify the time when the installation must start.

Note: Do not change the **qn** parameter.

Installing ABBYY FineReader 11 on a Terminal Server

ABBYY FineReader 11 has been tested for compatibility with Citrix XenApp 6.5 and with Windows Server 2008R2 and Windows Remote Desktop Services 7.0. Both solutions can be used with all versions of ABBYY FineReader 11. However, to enable multiple users to use ABBYY FineReader at the same time, you must use **ABBYY FineReader 11 Corporate Edition** and **Concurrent** licenses.

ABBYY FineReader 11 does not support application streaming.

1. Perform administrative installation.
The License Server and the License Manager can be installed on any computer in the local area network. See [Step 1. Administrative installation](#) for details.
2. Launch the License Manager.
3. Add all your licenses in the License Manager.
4. Install ABBYY FineReader 11 from the administrative installation folder onto the terminal server.

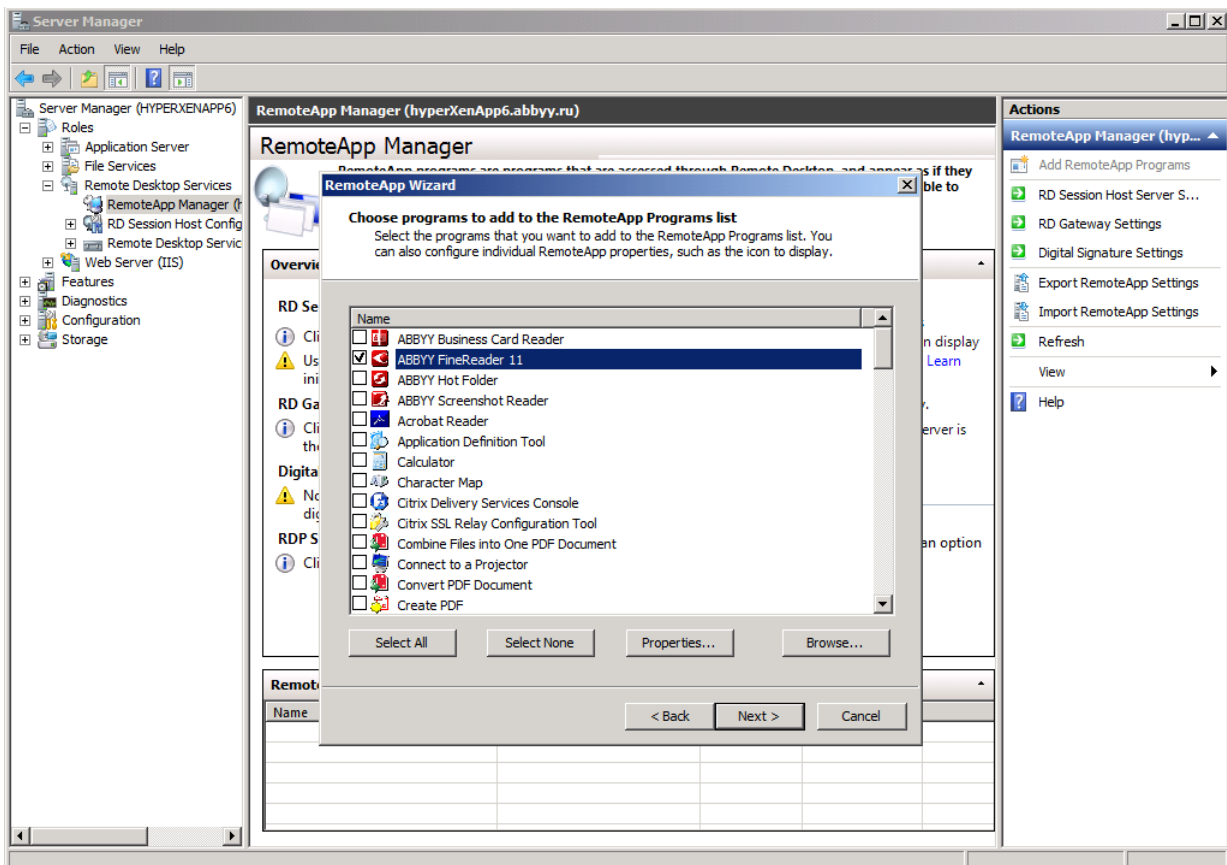
ABBYY FineReader will be installed on the terminal server as if it was a workstation. Now multiple users can remotely access the client part of the application.

Note: The License Server can also be installed on a terminal server.

Setting Up Windows RemoteApp

Make sure that ABBYY FineReader 11 is installed on your server.

1. In Server Manager, select **Roles>Remote Desktop Services>RemoteApp Manager**.
2. Click **Add RemoteApp Programs**.
3. Select **ABBYY FineReader 11** in the list of installed applications.



Setting Up Citrix XenApp

With Citrix XenApp, use "Installed application," "Accessed from a server." ABBYY FineReader 11 Corporate Edition must be installed on all the servers in your Citrix farm. Additionally, you must create a licensing server running a sufficient number of Concurrent licenses. You will need at least as many licenses as the number of users that will be accessing ABBYY FineReader 11 at any given time.

To set up Citrix XenApp:

1. Open the Citrix Delivery Services Console.
2. Select the farm where ABBYY FineReader 11 will be running.
3. Select **Action>Publish application**.
4. In the **Name** step, type in the name of the application and a description for the application.
5. In the **Type** step, select **Application**.
6. Under **Application type**, select **Accessed from a server**.
7. From the **Server application type** drop-down list, select **Installed application**.

ABBYY FineReader 11 - Publish Application (3/8)

CITRIX

Type
View the application type. To change the type, use the Change application type task.

Steps

- ✓ Welcome
- Basic**
- ✓ Name
- ▶ **Type**
- Location
- Servers
- Users
- Shortcut presentation
- Publish immediately

Choose the type of application to publish.

Server desktop

Content

Application

Application type

Accessed from a server

Streamed if possible, otherwise accessed from a server

Server application type:
Installed application

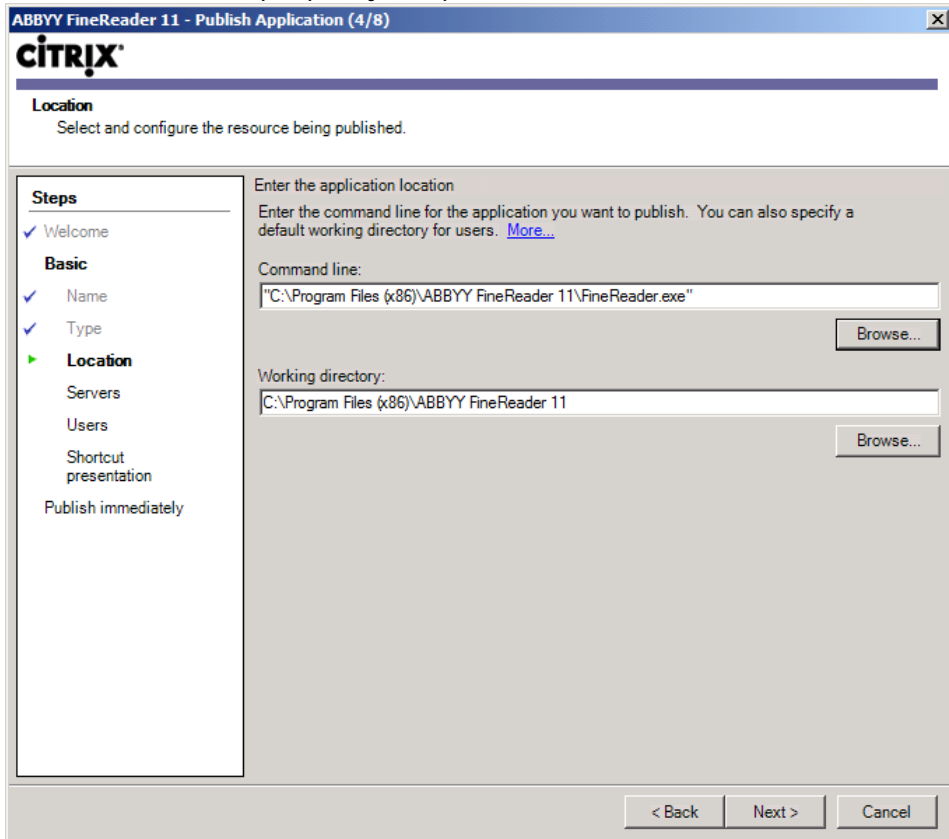
Streamed to client

Note: To change the application type after publishing it, you must use the Change Application Type task.

Quick Help
Grants users access to a single application already installed on your servers.

< Back Next > Cancel

8. In the **Location** step, specify the path to **FineReader.exe**.



9. Select the servers on which ABBYY FineReader 11 will run and the users who will have access to ABBYY FineReader 11.
10. In the last step, you can place an icon for the published application on the desktop and in the **Start** menu.

Frequently Asked Questions

How can I change the network connection settings?

You can change the connection settings used for communication among the License Server, the License Manager, and the workstations.

Setting up a network connection

1. To set up a network connection, use the following file
%programfiles%\Common Files\ABBYY\FineReader\11.00\Licensing\CE\Licensing.ini
This file is located on the computer where the License Server is installed.
2. In the above file, change the desired parameters:
 - Connection protocol
See [Setting up the connection protocol](#) for details.
 - Connection port
See [Setting up the connection port](#) for details.

E.g.:

[Licensing]

ConnectionProtocolType=TCP\IP

ConnectionEndpointName=81

Note: Make sure that your firewall does not prevent **%programfiles%\Common Files\ABBYY\FineReader\11.00\Licensing\CE\NetworkLicenseServer.exe** from accessing the specified port.

3. Copy the file **Licensing.ini**
 - in the License Manager folder on all the computers where the License Manager has been installed (by default, the License Manager is installed into **%programfiles%\ABBYY FineReader 11 CE License Manager**)
 - in the administrative installation folder where FineReader.exe is located, E.g. **\\MyFileServer\Programs Distributions\ABBYY FineReader 11**.

Important! For the changes to take effect, you must restart the ABBYY FineReader 11 CE Licensing Service
4. Install ABBYY FineReader on the workstations.
For detailed instructions, see [Step 3. Installing ABBYY FineReader 11 on Workstations](#).
Note: If ABBYY FineReader is already installed on the workstations, repair ABBYY FineReader on all the workstations. For detailed instructions, see [How can I repair ABBYY FineReader 11 on the workstations?](#)

Setting up the connection protocol

[Licensing]

ConnectionProtocolType=[TCP\IP | NAMED PIPES]

This parameter allows you to specify the protocol to be used (TCP\IP) or Named Pipes. This information will be used:

- by the License Manager to access the License Server
- by the workstations to access the License Server when installing or repairing ABBYY FineReader on the workstations

By default, **Named Pipes** is used.

Setting up the connection port

[Licensing]

ConnectionEndpointName=[port number for TCP\IP | channel name for Named Pipes]

This parameter allows you to specify the number of the port for the connection protocol or the name of the channel for Named Pipes. This information is used:

- by the License Manager to access the License Server
- by the workstations to access the License Server when installing or repairing ABBYY FineReader on the workstations

Note: Avoid changing the name of the named channel for the Named Pipes protocol that is set by the program when installing the License Server.

How can I repair ABBYY FineReader 11 on the workstations?

Repairing ABBYY FineReader 11 in interactive mode

On the workstation, do the following:

1. In **Start>Control Panel**, select **Add and Remove Programs**.
Note: In Microsoft Windows Vista and Microsoft Windows 7, this command is called **Programs and Features**.
2. In the list of installed programs, select **ABBYY FineReader 11 Corporate Edition** and click **Change**.
3. In the **Program Maintenance** dialog box that opens, select **Repair** and click **Next**.
4. Follow the instructions of the wizard.

Repairing ABBYY FineReader 11 via the command line

On the workstation, execute the following command:

- `msiexec /f {F1100000-0003-0000-0000-074957833700}`

How can I rename the computer hosting the License Server or move the License Server to another computer?

If you deployed ABBYY FineReader in the local area network and then changed the name of the computer hosting the License Server or an unexpected error occurred on the License Server computer, do the following:

1. Remove the License Server from the computer on which it was installed.
Note: If this computer is inaccessible, go to step 2.
 - a. In **Start>Control Panel**, select **Add and Remove Programs**.
Note: In Microsoft Windows Vista and Microsoft Windows 7, this command is called **Programs and Features**.
 - b. In the list of installed programs, select **ABBYY FineReader 11 CE License Server** and click **Remove**.
2. Install the License Server on a different computer, for example on \\NewServer.
3. On all the computers where the License Manager is installed, either edit or add the parameter **[Licensing]**
`NetworkServerName=<COMPUTER NAME>` in the file
`%Program Files%\ABBYY FineReader 11 CE License Manager\LicenseManager.ini`
This parameter allows you to specify the name of the server to be accessed by the License Manager. For example, specify

[Licensing]

NetworkServerName=MyComputerName

Important! For the changes to take effect, you must restart ABBYY FineReader 11 CE License Manager.

4. Add and activate your licenses in ABBYY FineReader 11 CE License Manager. For details, see the ABBYY FineReader License Manager help file.

5. In the administrative installation point, go to the ABBYY FineReader 11 folder and create a **Licensing.ini** file there.

The path to the administrative installation folder was specified earlier when creating the administrative installation point. For details, see [Creating an administrative installation point](#).

6. In the **Licensing.ini** file you have created, add the **NetworkServerName** parameter to the **[Licensing]** section. This parameter specifies the name of the server, for example

[Licensing]

NetworkServerName=MyComputerName

7. Reinstall ABBYY FineReader on all the workstations.

For detailed instructions, see [Step 3. Installing ABBYY FineReader 11 on Workstations](#).

Group Work in a LAN

ABBYY FineReader 11 provides tools and capabilities for processing documents over a local area network (LAN).

Processing the same ABBYY FineReader document on several computers

When running ABBYY FineReader over a local area network, all the program tools and capabilities are available on the workstations.

If an ABBYY FineReader document is to be used on several LAN computers simultaneously, the following should be taken into account:

- A separate copy of ABBYY FineReader 11 should be installed on each computer.
- All the users must have full access to the ABBYY FineReader document.
- Each user may add pages to the document and modify them.
- A document page that is being processed by one user is locked for the other users.
- The statuses of the pages can be viewed in the **Pages** window. Users can see who is currently working with a page (i.e. see the name of the corresponding user and computer), whether a page was recognized or edited, etc. This information will be displayed in the corresponding columns of the **Pages** window when **Details** view is selected.
- The fonts that are used in the ABBYY FineReader document must be installed on each computer. Otherwise, the recognized text may be displayed incorrectly.

Using the same user languages and dictionaries on several computers

In ABBYY FineReader 11, several users can use the same user languages and dictionaries simultaneously.

To make user dictionaries and languages available to multiple users:

1. Create/open an ABBYY FineReader document and select desired scanning and OCR options for the document.
2. Prior to creating a user language, specify a folder where user dictionaries will be stored. This folder should be accessible to all network users.

Note: By default, user dictionaries are stored in %Userprofile%\Application Data\ABBYY\FineReader\11.00\UserDictionaries if your computer is running Windows XP and in %Userprofile%\AppData\Roaming\ABBYY\FineReader\11.00\UserDictionaries if your computer is running Microsoft Windows Vista or Windows 7.

To specify the dictionary folder:

1. Select **Tools>Options...** and on the **Advanced** tab of the **Options** dialog box click the **User Dictionaries...** button.
 2. Click **Browse...** and select the folder.
3. Save your user patterns and languages to an *.fbt file:
 1. Select **Tools>Options...** and click the **Read** tab in the **Options** dialog box.
 2. Under **User patterns and languages**, click the **Save to File...** button.
 3. In the **Save Options** dialog box, specify a name for the *.fbt file and a folder where the file will be stored. This folder should be accessible to all network users.
 4. Now when a user creates a new ABBYY FineReader document, they must load the user patterns and languages from the *.fbt file saved at step 3 and specify the path to the folder created at step 2, where the user dictionaries are stored.

Important! To be able to access the user dictionaries, patterns, and languages, users must have

read/write permissions for the folders where they are stored.

To view the list of available user languages in the **Language Editor** dialog box (select **Tools>Language Editor...** and scroll to **User languages**).

When a user language is being used by several users, it is available as "read-only," and users will not be able to change user language properties. However, words can be added to and deleted from a user dictionary that is being used on several LAN computers.

When a dictionary is being edited by a user, it is available as "read-only" to other users, i.e. users can use this dictionary to perform OCR and check spelling, but they cannot add or remove words.

Any changes a user makes to a user dictionary will become available to all users who have selected the folder where this dictionary is stored. For the changes to come into effect, users will need to restart ABBYY FineReader.

Technical Support

If you have any questions about how to install and use ABBYY FineReader 11 to which you cannot find answers in this System Administrator's Guide, please contact the ABBYY technical support service or ABBYY partners. For contact information, please refer to the "Support" section at www.abbyy.com.